

**TOURIST ACCOMMODATION, NEW SOUTH WALES
JUNE QUARTER 1994**

MAIN FEATURES

JUNE QUARTER 1994
COMPARED WITH
JUNE QUARTER 1993

HOTELS, MOTELS AND GUEST HOUSES

- Rooms available decreased by 1.0 per cent from 57,586 to 57,012 while bed spaces decreased from 165,718 to 165,117.
- Room nights occupied increased by 5.7 per cent from 2,624,123 to 2,773,587 overall. All Statistical Divisions in the State recorded an increase, ranging from 8.2 per cent for the Illawarra Statistical Division and 7.2 per cent for Sydney Statistical Division through to 0.9 per cent for the Central West Statistical Division.
- The room occupancy rate overall rose from 50.2 per cent to 53.5 per cent, with Sydney Statistical Division recording a 5.8 percentage point increase to 60.8 per cent.
- Guest nights increased by 6.0 per cent from 4,553,103 to 4,826,177 and the bed occupancy rate increased from 30.2 per cent to 32.1 per cent.
- Guest arrivals increased by 6.7 per cent from 2,456,632 to 2,621,538 while the average length of stay decreased from 1.9 days to 1.8 days overall, ranging from 2.4 days for star grade 5 establishments to 1.6 days for star grade 2 establishments.
- Takings from accommodation increased by 9.6 per cent from \$213.0m to \$233.5m and average takings per room night occupied increased from \$81 to \$84.

HOLIDAY FLATS, UNITS AND HOUSES

- The number of units, etc. available for short-term letting increased by 2.0 per cent from 10,159 to 10,362 while unit nights occupied increased by 2.3 per cent from 316,031 to 323,406.
- The unit occupancy rate increased marginally from 34.2 per cent to 34.3 per cent.
- Unit lettings increased by 5.2 per cent from 57,305 to 60,292 while the average length of stay decreased slightly from 5.5 days to 5.4 days.
- Accommodation takings increased by 5.9 per cent from \$16.5m to \$17.4m and the average takings per unit night occupied increased from \$52 to \$54.

CARAVAN PARKS

- Caravan park capacity available decreased slightly from 94,879 to 94,769 powered and unpowered sites and cabins, etc of which 15,831 sites, etc. (16.7 per cent) were occupied by long-term residents, 23,226 sites (24.5 per cent) were permanently reserved but only casually occupied by their tenants and an average of 9,294 sites (9.8 per cent) were occupied by other short-term guests.
- Site nights occupied increased by 2.7 per cent from 4,283,044 to 4,399,929 and the site occupancy rate rose by 1.4 percentage points to 51.0 per cent.
- Takings from accommodation rose by 2.9 per cent from \$36.0m to \$37.0m with the average takings per site night occupied remaining at \$8.

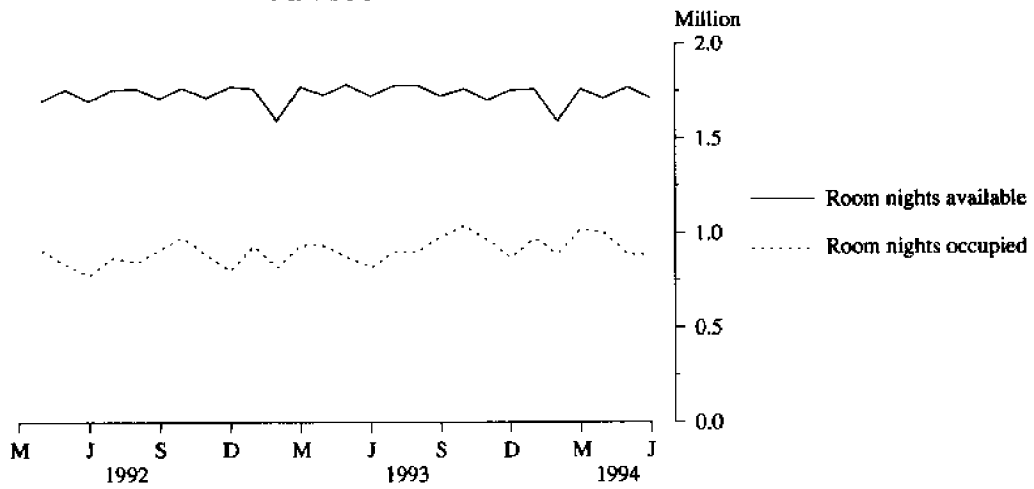
VISITOR HOSTELS

- Bed spaces available increased by 1.3 per cent from 4,917 to 4,979 and guest nights increased by 4.6 per cent from 196,679 to 205,731.
- The bed occupancy rate rose from 44.1 per cent to 45.4 per cent.
- Guest arrivals decreased from 60,640 to 59,598 while the average length of stay rose from 3.2 days to 3.5 days.
- Accommodation takings increased by 8.4 per cent from \$2.5m to \$2.7m at an average tariff of \$13 per guest night.

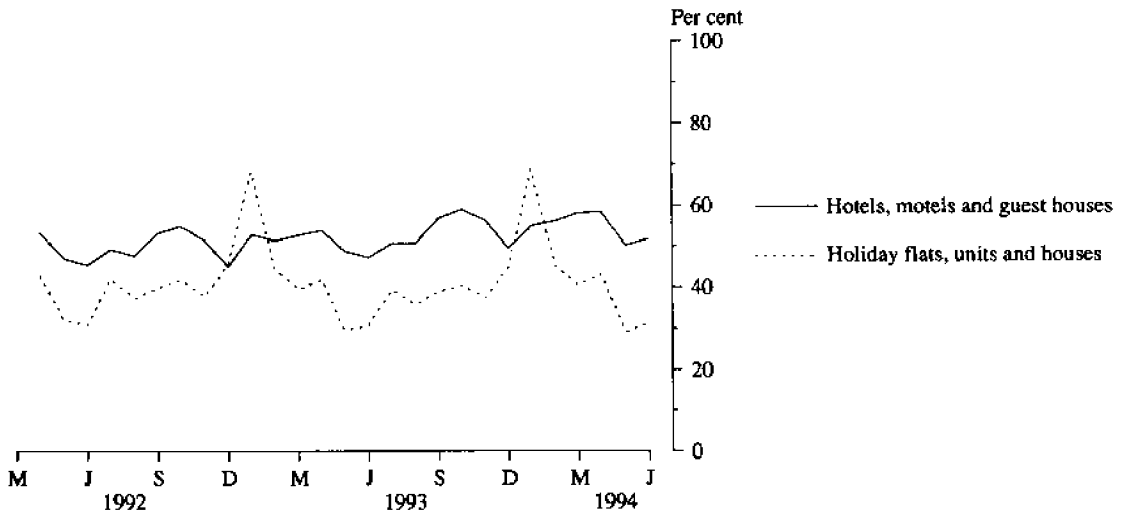
INQUIRIES

- *for further information about statistics in this publication and the availability of related unpublished statistics, contact Jillian Johnson on 008 077327 or any ABS office.*
- *for information about other ABS statistics and services, refer to the back page of this publication.*

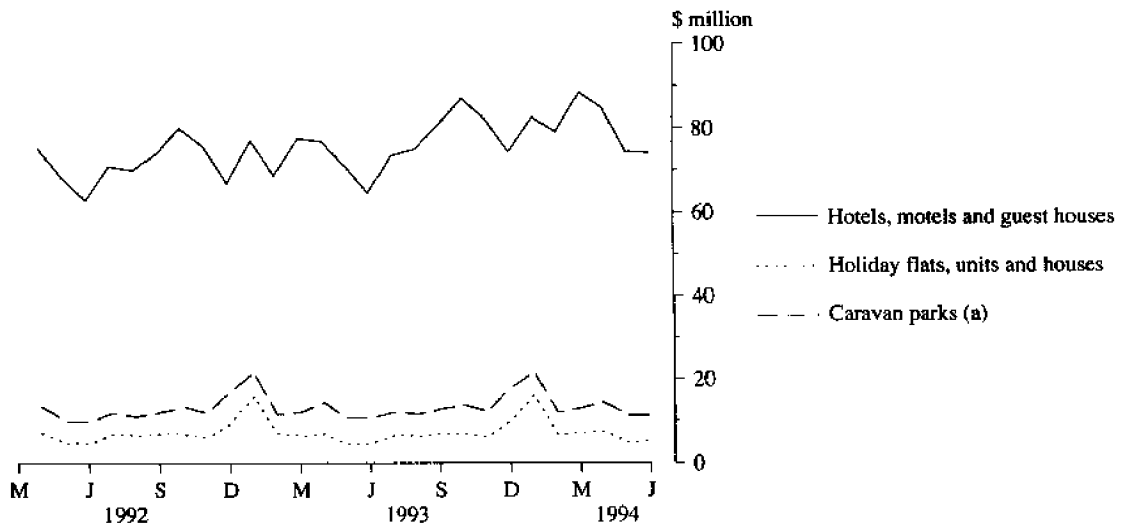
**MONTHLY ROOM NIGHTS AVAILABLE AND OCCUPIED:
HOTELS, MOTELS AND GUEST HOUSES,
NEW SOUTH WALES**



**MONTHLY OCCUPANCY RATES,
NEW SOUTH WALES**



**MONTHLY TAKINGS FROM ACCOMMODATION,
NEW SOUTH WALES**



(a) Includes ACT establishments before March quarter 1993.

CONTENTS

<i>Table</i>		<i>Page</i>
..	Main features	1
..	Diagrams	2
1	Summary of hotels, motels and guest houses with facilities, New South Wales	4
2	Summary of caravan parks, New South Wales	5
3	Summary of holiday flats, units and houses, New South Wales	6
4	Summary of visitor hostels, New South Wales	6
5	Hotels, motels and guest houses with facilities by establishment size, New South Wales	7
6	Hotels, motels and guest houses with facilities by star grading, Sydney Statistical Division and New South Wales	8
7	Hotels, motels and guest houses with facilities by statistical division, New South Wales	10
8	Hotels, motels and guest houses with facilities: Statistical divisions and selected statistical local areas, New South Wales	14
9	Holiday flats, units and houses by statistical division, New South Wales	20
10	Holiday flats, units and houses: Selected statistical divisions and statistical local areas, New South Wales	22
11	Caravan parks: Statistical divisions and selected statistical local areas, New South Wales	24
12	Caravan parks by statistical division, New South Wales	28
13	Visitor hostels by statistical division, New South Wales	31
..	Explanatory Notes	32
..	Reference map – statistical divisions of New South Wales	35

TABLE 1 — SUMMARY OF HOTELS, MOTELS AND GUEST HOUSES WITH FACILITIES, NEW SOUTH WALES (a)

Particulars	Unit	Quarter ended				Year ended			
		March 1993	June 1993	September 1993	December 1993	March 1994	June 1994	June 1993	June 1994
LICENSED HOTELS WITH FACILITIES									
Establishments	No.	279	284	281	267	268	270
Guest rooms	No.	18,016	18,827	18,727	18,512	18,531	18,569
Bed spaces	No.	45,351	47,362	47,271	46,916	46,582	46,852
Employment (persons)	No.	15,287	15,787	15,951	16,038	16,058	16,227
Room nights occupied	'000	880.1	879.8	929.4	1,025.8	1,061.4	975.7	3,436.8	3,992.3
Room occupancy rate	per cent	55.4	51.4	53.9	60.7	63.7	57.7	52.5	59.0
Guest nights	'000	1,411.7	1,390.8	1,510.0	1,683.4	1,708.5	1,547.0	5,546.5	6,448.9
Bed occupancy rate	per cent	35.4	32.3	34.7	39.7	40.8	36.3	33.7	37.9
Guest arrivals	'000	619.2	607.2	722.0	791.0	809.7	710.5	2,496.8	3,033.2
Average length of stay	days	2.3	2.3	2.1	2.1	2.1	2.2	2.2	2.1
Takings from accommodation	\$'000	94,502	93,402	99,782	113,482	118,245	107,082	373,823	438,591
MOTELS AND GUEST HOUSES WITH FACILITIES									
Establishments	No.	1,455	1,479	1,475	1,459	1,452	1,458
Guest rooms	No.	39,221	38,759	38,630	38,389	38,238	38,443
Bed spaces	No.	118,743	118,356	118,298	117,847	117,503	118,265
Employment (persons)	No.	15,031	14,258	14,590	14,528	14,410	14,589
Room nights occupied	'000	1,807.7	1,744.3	1,855.3	1,846.0	1,821.4	1,797.9	7,152.7	7,320.6
Room occupancy rate	per cent	51.3	49.5	52.2	52.4	53.0	51.4	50.2	52.3
Guest nights	'000	3,448.0	3,162.3	3,427.6	3,439.1	3,465.2	3,279.2	13,325.4	13,611.1
Bed occupancy rate	per cent	32.3	29.4	31.5	31.8	32.8	30.5	30.8	31.6
Guest arrivals	'000	1,921.0	1,849.4	2,006.4	1,966.2	1,933.3	1,911.1	7,707.8	7,816.9
Average length of stay	days	1.8	1.7	1.7	1.7	1.8	1.7	1.7	1.7
Takings from accommodation	\$'000	129,003	119,596	129,672	130,079	131,829	126,379	500,389	517,960
TOTAL HOTELS, MOTELS AND GUEST HOUSES WITH FACILITIES									
Establishments	No.	1,734	1,763	1,756	1,726	1,720	1,728
Guest rooms	No.	57,237	57,586	57,357	56,901	56,769	57,012
Bed spaces	No.	164,094	165,718	165,569	164,763	164,085	165,117
Employment (persons)	No.	30,318	30,045	30,541	30,566	30,468	30,816
Room nights occupied	'000	2,687.8	2,624.1	2,784.7	2,871.8	2,882.8	2,773.6	10,589.5	11,312.9
Room occupancy rate	per cent	52.5	50.2	52.8	55.1	56.5	53.5	50.9	54.5
Guest nights	'000	4,859.7	4,553.1	4,937.6	5,122.6	5,173.6	4,826.2	18,871.9	20,060.0
Bed occupancy rate	per cent	33.1	30.2	32.4	34.0	35.1	32.1	31.6	33.4
Guest arrivals	'000	2,540.2	2,456.6	2,728.4	2,757.2	2,743.0	2,621.5	10,204.6	10,850.2
Average length of stay	days	1.9	1.9	1.8	1.9	1.9	1.8	1.8	1.8
Takings from accommodation	\$'000	223,504	212,998	229,454	243,561	250,074	233,461	874,212	956,551

(a) From December quarter 1993, establishments with fewer than 5 rooms have been formally excluded from the scope of this collection. See Explanatory Note 2 (page 32).

TABLE 2 — SUMMARY OF CARAVAN PARKS, NEW SOUTH WALES

Particulars	Unit	Quarter ended				Year ended			
		March 1993	June 1993	September 1993	December 1993	March 1994	June 1994	June 1993	June 1994
SHORT-TERM CARAVAN PARKS (a)									
Establishments	No.	410	410	471	471	471	469
Capacity									
On-site vans	No.	2,909	2,891	3,249	3,285	3,274	3,244
Other powered sites	No.	36,845	36,768	42,864	42,805	42,501	42,593
Unpowered sites	No.	14,550	14,526	15,883	16,010	15,526	14,999
Cabins, etc.	No.	2,585	2,649	2,849	2,835	2,876	2,916
<i>Total capacity</i>	<i>No.</i>	<i>56,889</i>	<i>56,834</i>	<i>64,845</i>	<i>64,935</i>	<i>64,177</i>	<i>63,752</i>
Sites occupied by long-term guests	No.	2,195	2,227	3,548	3,504	3,544	3,557
Other sites permanently reserved	No.	18,588	18,564	21,766	21,902	21,998	21,892
Employment (persons)	No.	1,645	1,626	1,788	1,891	1,893	1,795
Site nights occupied	'000	2,734.6	2,449.6	2,913.0	3,089.1	3,224.5	2,949.8	10,116.6	12,176.3
Site occupancy rate	per cent	53.5	47.4	48.8	52.4	55.8	50.8	48.9	51.9
Takings from accommodation	\$'000	26,274	18,693	21,210	27,967	29,955	21,453	86,518	100,584
LONG-TERM CARAVAN PARKS (a)									
Establishments	No.	384	383	326	327	326	325
Capacity									
On-site vans	No.	3,868	3,852	3,557	3,621	3,665	3,649
Other powered sites	No.	26,163	26,160	20,654	20,599	20,657	20,644
Unpowered sites	No.	6,173	6,089	4,818	4,986	4,835	4,788
Cabins, etc.	No.	1,956	1,944	1,810	1,861	1,915	1,936
<i>Total capacity</i>	<i>No.</i>	<i>38,160</i>	<i>38,045</i>	<i>30,839</i>	<i>31,067</i>	<i>31,072</i>	<i>31,017</i>
Sites occupied by long-term guests	No.	13,639	13,564	12,128	12,309	12,235	12,274
Other sites permanently reserved	No.	3,956	3,828	984	1,257	1,295	1,334
Employment (persons)	No.	1,348	1,350	1,189	1,227	1,183	1,179
Site nights occupied	'000	1,927.9	1,833.4	1,437.5	1,496.0	1,490.0	1,450.1	7,599.2	5,873.6
Site occupancy rate	per cent	56.2	53.0	50.7	52.5	53.3	51.4	54.0	52.0
Takings from accommodation	\$'000	19,030	17,291	15,377	16,162	16,901	15,560	72,366	64,000
TOTAL CARAVAN PARKS									
Establishments	No.	794	793	797	798	797	794
Capacity									
On-site vans	No.	6,777	6,743	6,806	6,906	6,939	6,893
Other powered sites	No.	63,008	62,928	63,518	63,404	63,158	63,237
Unpowered sites	No.	20,723	20,615	20,701	20,996	20,361	19,787
Cabins, etc.	No.	4,541	4,593	4,659	4,696	4,791	4,852
<i>Total capacity</i>	<i>No.</i>	<i>95,049</i>	<i>94,879</i>	<i>95,684</i>	<i>96,002</i>	<i>95,249</i>	<i>94,769</i>
Sites occupied by long-term guests	No.	15,834	15,791	15,676	15,813	15,779	15,831
Other sites permanently reserved	No.	22,544	22,392	22,750	23,159	23,293	23,226
Employment (persons)	No.	2,993	2,976	2,977	3,118	3,076	2,974
Site nights occupied	'000	4,662.5	4,283.0	4,350.4	4,585.1	4,714.4	4,399.9	17,715.9	18,049.9
Site occupancy rate	per cent	54.6	49.6	49.4	52.4	55.0	51.0	51.0	51.9
Takings from accommodation	\$'000	45,304	35,984	36,586	44,129	46,856	37,014	158,884	164,584

(a) A review of the occupancy of individual caravan parks resulted in reclassification in September quarter 1993 of a net 57 caravan parks from predominantly long-term to predominantly short-term.

TABLE 3 — SUMMARY OF HOLIDAY FLATS, UNITS AND HOUSES, NEW SOUTH WALES

Particulars	Unit	Quarter ended				Year ended			
		March 1993	June 1993	September 1993	December 1993	March 1994	June 1994	June 1993	June 1994
Letting entities	No.	418	409	412	409	404	405
Flats, units and houses									
Single bedroom	No.	1,971	1,937	1,940	1,983	1,931	1,912
Multiple bedroom	No.	8,537	8,222	8,385	8,457	8,458	8,450
Total flats, units and houses	No.	10,508	10,159	10,325	10,440	10,389	10,362
Bed spaces	No.	48,492	47,378	47,895	48,817	48,601	48,315
Employment (persons)(a)	No.	1,093	1,082	1,087	1,105	1,154	1,081
Unit nights occupied	'000	480.7	316.0	362.4	392.8	483.8	323.4	1,553.5	1,562.5
Unit occupancy rate	per cent	51.0	34.2	38.2	41.0	51.8	34.3	41.8	41.3
Unit lettings	'000	74.5	57.3	62.1	70.7	76.8	60.3	258.3	269.9
Average length of stay	days	6.5	5.5	5.8	5.6	6.3	5.4	6.0	5.8
Takings from accommodation	\$'000	29,679	16,451	20,227	23,450	30,463	17,423	89,394	91,562

(a) Employment numbers exclude real estate agents and their employees.

TABLE 4 — SUMMARY OF VISITOR HOSTELS, NEW SOUTH WALES

Particulars	Unit	Quarter ended				Year ended			
		March 1993	June 1993	September 1993	December 1993	March 1994	June 1994	June 1993	June 1994
Establishments	No.	77	76	74	78	79	77
Bed spaces	No.	5,109	4,917	4,825	5,026	5,129	4,979
Employment (persons)	No.	288	277	275	300	297	280
Guest nights	'000	265.3	196.7	205.4	258.7	268.7	205.7	929.7	938.5
Bed occupancy rate	per cent	58.3	44.1	46.3	56.5	58.2	45.4	50.8	51.7
Guest arrivals	'000	75.9	60.6	60.1	73.3	79.4	59.6	269.5	272.4
Average length of stay	days	3.5	3.2	3.4	3.5	3.4	3.5	3.4	3.4
Takings from accommodation	\$'000	3,274	2,525	2,514	3,406	3,575	2,736	11,366	12,231

TABLE 5 — HOTELS, MOTELS AND GUEST HOUSES WITH FACILITIES BY ESTABLISHMENT SIZE,
NEW SOUTH WALES (a)

Particulars	Establishment size (No. of rooms)						New South Wales
	1-9 (a)	10-15	16-25	26-50	51-100	101+	
ESTABLISHMENTS, CAPACITY AND EMPLOYMENT							
<i>June quarter 1993—</i>							
Establishments	200	424	527	429	104	79	1,763
Guest rooms	1,346	5,157	10,578	15,022	7,118	18,365	57,586
Bed spaces	4,126	15,826	31,965	45,963	21,438	46,400	165,718
Employment (persons)	1,292	2,356	3,287	5,944	3,737	13,429	30,045
<i>June quarter 1994—</i>							
Establishments	177	417	528	423	107	76	1,728
Guest rooms	1,288	5,096	10,653	14,757	7,287	17,931	57,012
Bed spaces	3,924	15,582	32,210	45,786	21,742	45,873	165,117
Employment (persons)	1,174	2,371	3,500	6,008	4,029	13,734	30,816
ROOM NIGHTS OCCUPIED ('000)							
<i>June quarter 1993</i>	44.8	211.0	445.7	623.5	330.0	969.1	2,624.1
<i>1994—</i>							
April	16.3	77.7	171.7	234.9	130.5	368.8	1,000.0
May	13.3	65.5	144.9	206.2	114.3	344.1	888.3
June	13.6	66.2	143.3	202.6	117.1	342.5	885.3
<i>June quarter 1994</i>	43.2	209.4	459.8	643.7	362.0	1,055.4	2,773.6
ROOM OCCUPANCY RATES (per cent)							
<i>June quarter 1993</i>	36.9	45.0	46.4	45.7	51.1	58.0	50.2
<i>1994—</i>							
April	42.5	50.8	53.8	53.1	59.7	68.6	58.5
May	33.5	41.5	44.1	45.1	50.6	61.9	50.3
June	35.2	43.3	44.9	45.8	53.6	63.7	51.8
<i>June quarter 1994</i>	37.0	45.2	47.6	47.9	54.6	64.7	53.5
GUEST NIGHTS ('000)							
<i>June quarter 1993</i>	85.0	390.6	828.7	1,115.3	592.9	1,540.6	4,553.1
<i>1994—</i>							
April	32.4	150.6	335.2	443.1	241.7	625.3	1,828.4
May	24.1	113.1	252.4	344.7	187.7	542.5	1,464.4
June	25.5	120.7	263.3	363.0	208.8	552.1	1,533.4
<i>June quarter 1994</i>	82.0	384.4	850.9	1,150.8	638.2	1,719.9	4,826.2
BED OCCUPANCY RATES (per cent)							
<i>June quarter 1993</i>	22.8	27.1	28.6	26.7	30.5	36.5	30.2
<i>1994—</i>							
April	27.7	32.2	34.7	32.3	37.1	45.4	36.9
May	19.9	23.4	25.4	24.3	27.8	38.1	28.6
June	21.7	25.8	27.3	26.4	32.0	40.1	31.0
<i>June quarter 1994</i>	23.1	27.1	29.1	27.6	32.3	41.2	32.1
GUEST ARRIVALS ('000)							
<i>June quarter 1993</i>	50.5	261.6	550.0	679.3	268.4	646.8	2,456.6
<i>1994—</i>							
April	18.6	98.8	214.2	269.8	105.8	266.4	973.5
May	14.5	78.2	165.8	215.2	87.3	243.6	804.5
June	15.3	83.3	174.4	226.5	98.2	245.7	843.5
<i>June quarter 1994</i>	48.4	260.3	554.5	711.5	291.2	755.7	2,621.5
AVERAGE LENGTH OF STAY (days)							
<i>June quarter 1993</i>	1.7	1.5	1.5	1.6	2.2	2.4	1.9
<i>June quarter 1994</i>	1.7	1.5	1.5	1.6	2.2	2.3	1.8
TAKINGS FROM ACCOMMODATION (\$'000)							
<i>June quarter 1993</i>	2,334	10,294	24,076	41,005	27,941	107,347	212,998
<i>1994—</i>							
April	922	3,919	9,670	15,693	11,482	43,212	84,898
May	715	3,072	7,702	13,123	9,703	40,159	74,473
June	720	3,204	7,975	13,335	10,032	38,825	74,091
<i>June quarter 1994</i>	2,356	10,195	25,347	42,150	31,217	122,196	233,461

(a) From December quarter 1993, establishments with fewer than 5 rooms have been formally excluded from the scope of this collection. See Explanatory Note 2 (page 32).

**TABLE 6 — HOTELS, MOTELS AND GUEST HOUSES WITH FACILITIES BY STAR GRADING,
SYDNEY STATISTICAL DIVISION AND NEW SOUTH WALES (a)**

Particulars	Sydney Statistical Division						Total
	Star grading					Ungraded	
	1 and 2	3	4	5			
ESTABLISHMENTS, CAPACITY AND EMPLOYMENT							
<i>June quarter 1993—</i>							
Establishments	81	145	54	19	54	353	
Guest rooms	2,583	7,000	n.p.	n.p.	2,297	26,267	
Bed spaces	7,021	19,180	n.p.	n.p.	5,694	67,398	
Employment (persons)	1,423	2,958	n.p.	n.p.	1,766	17,568	
<i>June quarter 1994—</i>							
Establishments	83	139	59	17	40	338	
Guest rooms	2,095	6,993	9,275	5,291	1,767	25,421	
Bed spaces	5,712	19,573	24,842	11,623	4,272	66,022	
Employment (persons)	1,293	3,239	6,556	5,360	1,539	17,987	
ROOM NIGHTS OCCUPIED ('000)							
<i>June quarter 1993</i>	117.5	337.1	n.p.	n.p.	102.1	1,312.6	
<i>1994—</i>							
April	34.2	125.4	200.9	110.5	25.4	496.4	
May	28.5	110.5	186.9	105.3	23.1	454.3	
June	29.0	115.0	189.8	98.0	24.2	456.1	
<i>June quarter 1994</i>	91.7	350.9	577.6	313.8	72.7	1,406.7	
ROOM OCCUPANCY RATES (per cent)							
<i>June quarter 1993</i>	50.1	53.0	n.p.	n.p.	49.1	55.0	
<i>1994—</i>							
April	54.4	59.8	72.2	69.6	47.9	65.1	
May	43.9	51.0	65.0	64.2	42.1	57.6	
June	46.2	54.8	68.2	61.8	45.7	59.8	
<i>June quarter 1994</i>	48.1	55.1	68.4	65.2	45.2	60.8	
GUEST NIGHTS ('000)							
<i>June quarter 1993</i>	193.6	591.9	n.p.	n.p.	150.6	2,143.8	
<i>1994—</i>							
April	61.2	232.1	337.5	182.5	36.9	850.2	
May	47.5	190.6	287.5	169.9	32.6	728.0	
June	50.0	210.2	305.4	155.0	33.7	754.3	
<i>June quarter 1994</i>	158.8	632.8	930.3	507.5	103.2	2,332.6	
BED OCCUPANCY RATES (per cent)							
<i>June quarter 1993</i>	30.4	34.0	n.p.	n.p.	29.3	35.0	
<i>1994—</i>							
April	35.7	39.5	45.3	52.3	28.8	42.9	
May	26.8	31.4	37.3	47.2	24.6	35.6	
June	29.2	35.8	41.0	44.5	26.3	38.1	
<i>June quarter 1994</i>	30.5	35.5	41.2	48.0	26.5	38.8	
GUEST ARRIVALS ('000)							
<i>June quarter 1993</i>	88.0	269.8	n.p.	n.p.	80.5	907.2	
<i>1994—</i>							
April	29.2	106.9	140.0	73.4	15.4	364.9	
May	23.9	90.5	126.8	72.4	14.8	328.5	
June	25.1	100.3	130.2	67.4	14.6	337.6	
<i>June quarter 1994</i>	78.2	297.7	397.0	213.2	44.8	1,031.0	
AVERAGE LENGTH OF STAY (days)							
<i>June quarter 1993</i>	2.2	2.2	n.p.	n.p.	1.9	2.4	
<i>June quarter 1994</i>	2.0	2.1	2.3	2.4	2.3	2.3	
TAKINGS FROM ACCOMMODATION (\$'000)							
<i>June quarter 1993</i>	6,938	26,358	n.p.	n.p.	9,517	134,197	
<i>1994—</i>							
April	2,084	10,422	21,274	17,097	2,515	53,392	
May	1,669	9,160	19,773	16,100	2,374	49,077	
June	1,734	9,397	19,857	14,083	2,316	47,387	
<i>June quarter 1994</i>	5,487	28,979	60,905	47,279	7,205	149,856	

TABLE 6 — HOTELS, MOTELS AND GUEST HOUSES WITH FACILITIES BY STAR GRADING,
SYDNEY STATISTICAL DIVISION AND NEW SOUTH WALES (a)—continued

New South Wales							
Particulars	Star grading					Ungraded	Total
	1	2	3	4	5		
ESTABLISHMENTS, CAPACITY AND EMPLOYMENT							
<i>June quarter 1993—</i>							
Establishments	39	573	738	121	20	272	1,763
Guest rooms	617	12,086	21,437	11,159	6,305	5,982	57,586
Bed spaces	1,633	36,822	64,569	32,050	13,839	16,805	165,718
Employment (persons)	309	4,467	8,200	7,537	6,111	3,421	30,045
<i>June quarter 1994—</i>							
Establishments	39	568	772	130	17	202	1,728
Guest rooms	532	11,771	22,498	12,359	5,291	4,561	57,012
Bed spaces	1,348	36,405	68,158	34,867	11,623	12,716	165,117
Employment (persons)	312	4,492	8,901	8,882	5,360	2,869	30,816
ROOM NIGHTS OCCUPIED ('000)							
<i>June quarter 1993</i>	23.6	478.2	1,003.8	587.9	325.0	205.6	2,624.1
<i>1994—</i>							
April	6.8	169.8	398.4	262.2	110.5	52.3	1,000.0
May	5.8	144.6	347.1	240.6	105.3	44.9	888.3
June	5.6	144.7	344.8	243.1	98.0	49.0	885.3
<i>June quarter 1994</i>	18.2	459.1	1,090.3	745.9	313.8	146.3	2,773.6
ROOM OCCUPANCY RATES (per cent)							
<i>June quarter 1993</i>	42.1	43.5	51.5	58.0	56.6	37.9	50.2
<i>1994—</i>							
April	42.4	48.1	59.1	70.7	69.6	38.2	58.5
May	35.3	39.6	49.8	62.8	64.2	31.9	50.3
June	35.3	41.0	51.1	65.6	61.8	35.8	51.8
<i>June quarter 1994</i>	37.6	42.9	53.3	66.3	65.2	35.3	53.5
GUEST NIGHTS ('000)							
<i>June quarter 1993</i>	38.8	862.7	1,820.4	969.0	528.7	333.5	4,553.1
<i>1994—</i>							
April	11.2	326.8	762.7	459.1	182.5	86.0	1,828.4
May	8.9	249.5	590.8	375.9	169.9	69.4	1,464.4
June	8.6	265.6	625.6	399.8	155.0	78.8	1,533.4
<i>June quarter 1994</i>	28.6	841.9	1,979.2	1,234.8	507.5	234.3	4,826.2
BED OCCUPANCY RATES (per cent)							
<i>June quarter 1993</i>	26.1	25.8	31.0	33.3	42.0	21.9	30.2
<i>1994—</i>							
April	27.6	29.9	37.3	43.9	52.3	22.6	36.9
May	21.2	22.1	28.0	34.8	47.2	17.7	28.6
June	21.2	24.3	30.6	38.2	44.5	20.7	31.0
<i>June quarter 1994</i>	23.3	25.4	31.9	38.9	48.0	20.3	32.1
GUEST ARRIVALS ('000)							
<i>June quarter 1993</i>	20.4	534.0	1,089.3	448.3	180.2	184.5	2,456.6
<i>1994—</i>							
April	5.6	198.6	446.7	206.1	73.4	43.1	973.5
May	4.4	157.6	354.5	179.3	72.4	36.3	804.5
June	4.5	168.0	377.5	185.3	67.4	40.7	843.5
<i>June quarter 1994</i>	14.5	524.2	1,178.7	570.7	213.2	120.2	2,621.5
AVERAGE LENGTH OF STAY (days)							
<i>June quarter 1993</i>	1.9	1.6	1.7	2.2	2.9	1.8	1.9
<i>June quarter 1994</i>	2.0	1.6	1.7	2.2	2.4	1.9	1.8
TAKINGS FROM ACCOMMODATION (\$'000)							
<i>June quarter 1993</i>	976	24,051	67,365	58,670	46,360	15,576	212,998
<i>1994—</i>							
April	289	8,767	27,824	27,010	17,097	3,911	84,898
May	243	7,085	23,286	24,337	16,100	3,423	74,473
June	228	7,374	23,628	25,102	14,083	3,675	74,091
<i>June quarter 1994</i>	760	23,226	74,738	76,449	47,279	11,009	233,461

(a) From December quarter 1993, establishments with fewer than 5 rooms have been formally excluded from the scope of this collection. See Explanatory Note 2 (page 32).

TABLE 7 — HOTELS, MOTELS AND GUEST HOUSES WITH FACILITIES BY STATISTICAL DIVISION,
NEW SOUTH WALES (a)

Particulars	Sydney (SD)			Hunter (SD)			Illawarra (SD)		
	Licensed hotels	Motels, etc.	Total	Licensed hotels	Motels, etc.	Total	Licensed hotels	Motels, etc.	Total
ESTABLISHMENTS, CAPACITY AND EMPLOYMENT									
<i>June quarter 1993—</i>									
Establishments	113	240	353	20	141	161	16	108	124
Guest rooms	14,894	11,373	26,267	428	3,396	3,824	558	2,309	2,867
Bed spaces	35,275	32,123	67,398	1,230	10,489	11,719	1,661	6,804	8,465
Employment (persons)	12,919	4,649	17,568	373	1,614	1,987	568	870	1,438
<i>June quarter 1994—</i>									
Establishments	108	230	338	20	140	160	16	106	122
Guest rooms	14,607	10,814	25,421	430	3,528	3,958	556	2,272	2,828
Bed spaces	34,684	31,338	66,022	1,273	10,846	12,119	1,555	6,818	8,373
Employment (persons)	13,292	4,695	17,987	380	1,717	2,097	564	920	1,484
ROOM NIGHTS OCCUPIED ('000)									
<i>June quarter 1993</i>	754.6	558.1	1,312.6	15.2	155.5	170.6	21.6	86.5	108.1
<i>1994—</i>									
April	296.9	199.5	496.4	5.1	58.1	63.1	8.4	33.8	42.2
May	278.5	175.8	454.3	4.4	52.6	57.0	8.6	30.6	39.1
June	271.7	184.4	456.1	4.6	51.9	56.5	7.2	28.5	35.7
<i>June quarter 1994</i>	847.0	559.7	1,406.7	14.1	162.5	176.6	24.1	92.8	117.0
ROOM OCCUPANCY RATES (per cent)									
<i>June quarter 1993</i>	55.8	54.1	55.0	38.9	50.3	49.1	42.5	41.2	41.4
<i>1994—</i>									
April	67.8	61.5	65.1	39.2	54.9	53.2	50.3	49.9	50.0
May	61.5	52.4	57.6	33.3	48.1	46.5	49.6	43.8	44.9
June	62.0	56.8	59.8	35.7	49.0	47.6	43.2	42.2	42.4
<i>June quarter 1994</i>	63.7	56.9	60.8	36.0	50.6	49.0	47.7	45.3	45.8
GUEST NIGHTS ('000)									
<i>June quarter 1993</i>	1,182.0	961.8	2,143.8	26.0	271.5	297.5	34.9	156.7	191.6
<i>1994—</i>									
April	481.6	368.6	850.2	9.7	108.4	118.1	14.7	67.5	82.2
May	427.2	300.8	728.0	7.4	85.1	92.5	12.1	51.2	63.3
June	426.0	328.4	754.3	8.1	89.0	97.1	11.2	49.6	60.8
<i>June quarter 1994</i>	1,334.8	997.7	2,332.6	25.3	282.5	307.8	38.1	168.2	206.3
BED OCCUPANCY RATES (per cent)									
<i>June quarter 1993</i>	36.9	33.0	35.0	23.3	28.5	27.9	23.1	25.3	24.9
<i>1994—</i>									
April	46.3	39.2	42.9	25.5	33.3	32.5	31.5	33.1	32.8
May	39.7	31.0	35.6	18.8	25.3	24.6	25.2	24.4	24.5
June	40.9	34.9	38.1	21.3	27.4	26.7	24.1	24.4	24.3
<i>June quarter 1994</i>	42.3	35.0	38.8	21.8	28.6	27.9	26.9	27.3	27.2
GUEST ARRIVALS ('000)									
<i>June quarter 1993</i>	495.7	411.6	907.2	13.9	165.9	179.8	18.5	94.1	112.5
<i>1994—</i>									
April	207.4	157.5	364.9	4.7	60.3	65.0	8.4	38.3	46.7
May	195.5	133.0	328.5	3.6	50.7	54.2	6.4	29.9	36.3
June	192.6	145.0	337.6	4.0	53.6	57.6	6.7	29.4	36.1
<i>June quarter 1994</i>	595.5	435.5	1,031.0	12.3	164.5	176.8	21.4	97.6	119.1
AVERAGE LENGTH OF STAY (days)									
<i>June quarter 1993</i>	2.4	2.3	2.4	1.9	1.6	1.7	1.9	1.7	1.7
<i>June quarter 1994</i>	2.2	2.3	2.3	2.1	1.7	1.7	1.8	1.7	1.7
TAKINGS FROM ACCOMMODATION (\$'000)									
<i>June quarter 1993</i>	86,629	47,569	134,197	710	11,335	12,045	1,805	6,192	7,997
<i>1994—</i>									
April	35,290	18,102	53,392	309	4,506	4,815	787	2,506	3,293
May	33,240	15,837	49,077	189	3,869	4,058	650	2,167	2,817
June	30,980	16,407	47,387	215	3,854	4,069	1,112	2,223	3,335
<i>June quarter 1994</i>	99,510	50,346	149,856	713	12,230	12,943	2,549	6,896	9,445

TABLE 7 — HOTELS, MOTELS AND GUEST HOUSES WITH FACILITIES BY STATISTICAL DIVISION,
NEW SOUTH WALES (a)—continued

Particulars	Richmond - Tweed (SD)			Mid - North Coast (SD)			Northern (SD)		
	Licensed hotels	Motels, etc.	Total	Licensed hotels	Motels, etc.	Total	Licensed hotels	Motels, etc.	Total
ESTABLISHMENTS, CAPACITY AND EMPLOYMENT									
<i>June quarter 1993—</i>									
Establishments	9	102	111	15	186	201	12	115	127
Guest rooms	137	1,884	2,021	253	3,922	4,175	161	2,560	2,721
Bed spaces	423	6,130	6,553	658	12,770	13,428	437	7,921	8,358
Employment (persons)	119	591	710	212	1,595	1,807	94	823	917
<i>June quarter 1994—</i>									
Establishments	9	101	110	14	179	193	11	115	126
Guest rooms	137	1,884	2,021	274	3,879	4,153	163	2,567	2,730
Bed spaces	426	6,066	6,492	708	12,519	13,227	436	7,925	8,361
Employment (persons)	115	593	708	254	1,611	1,865	98	844	942
ROOM NIGHTS OCCUPIED ('000)									
<i>June quarter 1993</i>	4.8	78.7	83.5	7.6	173.1	180.8	4.1	125.2	129.3
<i>1994—</i>									
April	1.7	28.5	30.3	2.8	66.8	69.6	1.6	45.6	47.2
May	1.3	24.2	25.5	2.6	55.8	58.4	1.6	40.8	42.4
June	1.6	28.0	29.6	3.0	57.5	60.5	1.2	40.9	42.1
<i>June quarter 1994</i>	4.6	80.7	85.4	8.4	180.1	188.5	4.4	127.3	131.7
ROOM OCCUPANCY RATES (per cent)									
<i>June quarter 1993</i>	38.8	46.3	45.8	33.2	48.6	47.6	27.9	53.7	52.2
<i>1994—</i>									
April	42.2	50.5	49.9	34.5	57.4	55.9	33.4	59.2	57.6
May	31.1	41.4	40.7	30.4	46.4	45.4	31.1	51.3	50.1
June	38.7	49.6	48.8	36.5	49.4	48.5	24.4	53.1	51.4
<i>June quarter 1994</i>	37.3	47.1	46.4	33.8	51.0	49.9	29.7	54.5	53.0
GUEST NIGHTS ('000)									
<i>June quarter 1993</i>	8.8	150.5	159.3	11.9	352.9	364.9	6.6	221.6	228.2
<i>1994—</i>									
April	3.2	55.5	58.7	4.7	143.8	148.5	2.4	83.8	86.2
May	2.2	41.9	44.1	3.9	104.5	108.3	2.3	69.3	71.5
June	2.8	50.6	53.4	4.6	115.3	119.9	1.7	74.4	76.1
<i>June quarter 1994</i>	8.2	148.0	156.2	13.2	363.6	376.8	6.4	227.4	233.8
BED OCCUPANCY RATES (per cent)									
<i>June-quarter 1993</i>	22.8	27.2	26.9	19.9	30.4	29.9	16.5	30.7	30.0
<i>1994—</i>									
April	25.0	30.5	30.1	22.3	38.3	37.4	18.4	35.2	34.4
May	16.5	22.3	21.9	17.7	26.9	26.4	16.6	28.2	27.6
June	22.1	27.8	27.4	21.4	30.7	30.2	13.1	31.3	30.3
<i>June quarter 1994</i>	21.2	26.8	26.4	20.4	31.9	31.3	16.0	31.5	30.7
GUEST ARRIVALS ('000)									
<i>June quarter 1993</i>	4.6	96.3	100.9	7.3	214.0	221.3	5.1	160.6	165.7
<i>1994—</i>									
April	1.7	34.1	35.8	2.7	86.2	88.9	1.9	59.4	61.2
May	1.1	27.1	28.3	2.4	66.6	69.0	1.6	50.0	51.6
June	1.4	32.1	33.4	2.7	74.8	77.5	1.2	53.5	54.7
<i>June quarter 1994</i>	4.2	93.3	97.5	7.8	227.6	235.4	4.6	163.0	167.6
AVERAGE LENGTH OF STAY (days)									
<i>June quarter 1993</i>	1.9	1.6	1.6	1.6	1.6	1.6	1.3	1.4	1.4
<i>June quarter 1994</i>	2.0	1.6	1.6	1.7	1.6	1.6	1.4	1.4	1.4
TAKINGS FROM ACCOMMODATION (\$'000)									
<i>June quarter 1993</i>	205	4,340	4,545	279	10,090	10,368	162	6,859	7,022
<i>1994—</i>									
April	85	1,645	1,730	128	4,251	4,380	57	2,550	2,607
May	61	1,276	1,337	103	3,098	3,201	50	2,232	2,281
June	70	1,507	1,577	117	3,295	3,412	47	2,322	2,369
<i>June quarter 1994</i>	216	4,429	4,644	348	10,644	10,993	153	7,104	7,258

TABLE 7 — HOTELS, MOTELS AND GUEST HOUSES WITH FACILITIES BY STATISTICAL DIVISION,
NEW SOUTH WALES (a)—continued

Particulars	North Western and Far West (SDs)			Central West (SD)			South Eastern (SD)		
	Licensed hotels	Motels, etc.	Total	Licensed hotels	Motels, etc.	Total	Licensed hotels	Motels, etc.	Total
ESTABLISHMENTS, CAPACITY AND EMPLOYMENT									
<i>June quarter 1993—</i>									
Establishments	18	108	126	16	79	95	28	194	222
Guest rooms	272	2,417	2,689	427	1,709	2,136	975	4,291	5,266
Bed spaces	719	7,674	8,393	1,158	5,224	6,382	3,959	13,728	17,687
Employment (persons)	237	832	1,069	363	574	937	503	1,141	1,644
<i>June quarter 1994—</i>									
Establishments	14	109	123	14	76	90	28	194	222
Guest rooms	270	2,452	2,722	417	1,701	2,118	1,014	4,337	5,351
Bed spaces	722	7,783	8,505	1,150	5,215	6,365	4,037	13,900	17,937
Employment (persons)	247	873	1,120	299	606	905	588	1,178	1,766
ROOM NIGHTS OCCUPIED ('000)									
<i>June quarter 1993</i>	10.6	120.9	131.5	19.3	79.6	98.9	16.5	135.1	151.7
<i>1994—</i>									
April	3.8	45.6	49.3	6.2	30.4	36.6	5.7	55.2	60.9
May	3.9	40.3	44.2	6.2	27.5	33.6	5.2	43.3	48.5
June	3.8	43.1	46.9	5.4	24.2	29.6	6.7	43.4	50.1
<i>June quarter 1994</i>	11.5	129.0	140.4	17.8	82.0	99.8	17.6	141.9	159.5
ROOM OCCUPANCY RATES (per cent)									
<i>June quarter 1993</i>	42.9	54.9	53.7	49.6	51.4	51.0	18.6	34.6	31.6
<i>1994—</i>									
April	46.7	61.9	60.4	49.7	59.5	57.5	18.8	42.4	37.9
May	46.1	53.1	52.4	47.6	52.1	51.2	16.5	32.4	29.3
June	47.1	58.5	57.4	43.2	47.3	46.5	22.1	33.4	31.2
<i>June quarter 1994</i>	46.6	57.8	56.7	46.9	53.0	51.8	19.1	36.0	32.8
GUEST NIGHTS ('000)									
<i>June quarter 1993</i>	18.3	227.8	246.1	29.4	138.8	168.3	31.4	253.1	284.5
<i>1994—</i>									
April	6.4	92.1	98.4	10.2	54.7	64.9	10.4	105.7	116.1
May	6.1	68.7	74.8	9.3	45.3	54.6	8.4	72.6	81.0
June	6.6	83.8	90.3	8.9	41.8	50.7	14.2	81.9	96.1
<i>June quarter 1994</i>	19.1	244.5	263.6	28.4	141.8	170.2	33.0	260.2	293.2
BED OCCUPANCY RATES (per cent)									
<i>June quarter 1993</i>	28.0	32.6	32.2	27.9	29.3	29.0	8.7	20.3	17.7
<i>1994—</i>									
April	29.5	39.4	38.6	29.5	35.0	34.0	8.6	25.3	21.6
May	27.5	28.5	28.4	26.2	28.0	27.7	6.7	16.9	14.6
June	30.4	35.9	35.4	25.7	26.7	26.6	11.7	19.6	17.9
<i>June quarter 1994</i>	29.1	34.5	34.1	27.1	29.9	29.4	9.0	20.6	18.0
GUEST ARRIVALS ('000)									
<i>June quarter 1993</i>	10.4	168.1	178.5	14.2	104.6	118.8	14.6	162.6	177.2
<i>1994—</i>									
April	4.3	64.9	69.2	5.4	39.4	44.8	5.6	68.1	73.7
May	3.7	48.0	51.6	4.9	33.9	38.9	4.7	47.0	51.8
June	4.2	59.1	63.4	4.6	32.2	36.8	5.7	53.5	59.2
<i>June quarter 1994</i>	12.2	172.0	184.2	15.0	105.5	120.5	16.0	168.6	184.6
AVERAGE LENGTH OF STAY (days)									
<i>June quarter 1993</i>	1.8	1.4	1.4	2.1	1.3	1.4	2.2	1.6	1.6
<i>June quarter 1994</i>	1.6	1.4	1.4	1.9	1.3	1.4	2.1	1.5	1.6
TAKINGS FROM ACCOMMODATION (\$'000)									
<i>June quarter 1993</i>	589	6,871	7,461	839	4,814	5,653	1,129	7,832	8,961
<i>1994—</i>									
April	205	2,715	2,920	312	1,899	2,211	285	3,165	3,450
May	205	2,263	2,468	262	1,654	1,917	238	2,245	2,482
June	207	2,539	2,745	251	1,471	1,722	547	2,600	3,147
<i>June quarter 1994</i>	617	7,517	8,134	825	5,025	5,850	1,070	8,009	9,079

TABLE 7 — HOTELS, MOTELS AND GUEST HOUSES WITH FACILITIES BY STATISTICAL DIVISION,
NEW SOUTH WALES (a)—continued

Particulars	Murrumbidgee (SD)			Murray (SD)			New South Wales		
	Licensed hotels	Motels, etc.	Total	Licensed hotels	Motels, etc.	Total	Licensed hotels	Motels, etc.	Total
ESTABLISHMENTS, CAPACITY AND EMPLOYMENT									
<i>June quarter 1993—</i>									
Establishments	15	73	88	22	133	155	284	1,479	1,763
Guest rooms	262	1,747	2,009	460	3,151	3,611	18,827	38,759	57,586
Bed spaces	642	5,291	5,933	1,200	10,202	11,402	47,362	118,356	165,718
Employment (persons)	166	567	733	233	1,002	1,235	15,787	14,258	30,045
<i>June quarter 1994—</i>									
Establishments	14	75	89	22	133	155	270	1,458	1,728
Guest rooms	261	1,778	2,039	440	3,231	3,671	18,569	38,443	57,012
Bed spaces	638	5,445	6,083	1,223	10,410	11,633	46,852	118,265	165,117
Employment (persons)	163	589	752	227	963	1,190	16,227	14,589	30,816
ROOM NIGHTS OCCUPIED ('000)									
<i>June quarter 1993</i>	9.8	85.4	95.2	15.7	146.3	162.0	879.8	1,744.3	2,624.1
<i>1994—</i>									
April	4.4	32.1	36.5	5.9	62.0	67.9	342.5	657.5	1,000.0
May	3.9	28.8	32.6	4.4	48.4	52.8	320.4	567.9	888.3
June	3.5	24.8	28.3	4.1	45.9	49.9	312.8	572.4	885.3
<i>June quarter 1994</i>	11.7	85.7	97.4	14.3	156.2	170.6	975.7	1,797.9	2,773.6
ROOM OCCUPANCY RATES (per cent)									
<i>June quarter 1993</i>	41.1	54.0	52.3	37.5	51.0	49.3	51.4	49.5	50.2
<i>1994—</i>									
April	55.6	60.3	59.7	44.4	64.2	61.8	61.5	57.0	58.5
May	47.8	52.2	51.6	32.3	48.4	46.5	55.7	47.7	50.3
June	45.0	46.4	46.2	30.9	47.4	45.4	56.2	49.7	51.8
<i>June quarter 1994</i>	49.4	52.9	52.5	35.8	53.3	51.2	57.7	51.4	53.5
GUEST NIGHTS ('000)									
<i>June quarter 1993</i>	15.4	148.7	164.1	26.1	278.9	305.0	1,390.8	3,162.3	4,553.1
<i>1994—</i>									
April	6.5	59.7	66.2	10.5	128.2	138.7	560.5	1,267.9	1,828.4
May	5.1	46.9	52.0	7.1	87.1	94.2	491.1	973.3	1,464.4
June	4.7	41.1	45.8	6.6	82.2	88.8	495.4	1,038.0	1,533.4
<i>June quarter 1994</i>	16.3	147.7	164.0	24.2	297.5	321.7	1,547.0	3,279.2	4,826.2
BED OCCUPANCY RATES (per cent)									
<i>June quarter 1993</i>	26.3	31.0	30.5	23.9	30.0	29.4	32.3	29.4	30.2
<i>1994—</i>									
April	34.1	36.6	36.3	28.7	41.1	39.8	39.9	35.8	36.9
May	25.7	27.8	27.6	18.7	27.0	26.2	33.8	26.6	28.6
June	24.6	25.2	25.1	18.0	26.3	25.5	35.2	29.3	31.0
<i>June quarter 1994</i>	28.1	29.8	29.6	21.8	31.5	30.4	36.3	30.5	32.1
GUEST ARRIVALS ('000)									
<i>June quarter 1993</i>	9.0	103.8	112.8	13.9	167.9	181.8	607.2	1,849.4	2,456.6
<i>1994—</i>									
April	3.4	40.8	44.2	4.8	74.3	79.1	250.3	723.3	973.5
May	3.0	32.5	35.6	3.5	55.2	58.8	230.4	574.1	804.5
June	3.0	28.8	31.9	3.7	51.6	55.3	229.8	613.7	843.5
<i>June quarter 1994</i>	9.4	102.2	111.6	12.1	181.2	193.2	710.5	1,911.1	2,621.5
AVERAGE LENGTH OF STAY (days)									
<i>June quarter 1993</i>	1.7	1.4	1.5	1.9	1.7	1.7	2.3	1.7	1.9
<i>June quarter 1994</i>	1.7	1.4	1.5	2.0	1.6	1.7	2.2	1.7	1.8
TAKINGS FROM ACCOMMODATION (\$'000)									
<i>June quarter 1993</i>	470	4,900	5,370	586	8,793	9,379	93,402	119,596	212,998
<i>1994—</i>									
April	202	1,856	2,058	239	3,802	4,042	37,900	46,998	84,898
May	168	1,638	1,806	164	2,864	3,028	35,328	39,145	74,473
June	155	1,392	1,547	153	2,626	2,780	33,854	40,236	74,091
<i>June quarter 1994</i>	524	4,886	5,410	557	9,293	9,850	107,082	126,379	233,461

(a) From December quarter 1993, establishments with fewer than 5 rooms have been formally excluded from the scope of this collection. See Explanatory Note 2 (page 32).

TABLE 8 — HOTELS, MOTELS AND GUEST HOUSES WITH FACILITIES: STATISTICAL DIVISIONS

Statistical Divisions and selected Statistical Local Areas	Establish- ments	Guest rooms	Bed spaces	Employ- ment (persons)	Room nights occupied				Room occupancy rates (per cent)			
					Apr.	May	June	June qtr	Apr.	May	June	June qtr
					SYDNEY STATISTICAL DIVISION							
Ashfield (M)	6	248	728	59	4,123	3,721	3,940	11,784	55.4	48.4	53.0	52.2
Bankstown (C)	10	348	981	205	5,917	5,511	6,154	17,582	56.7	51.1	58.9	55.5
Blacktown (C)	6	236	732	162	3,786	2,784	3,625	10,195	53.5	38.1	51.2	47.5
Blue Mountains (C)	32	1,102	2,962	873	20,119	15,891	15,196	51,206	60.9	46.5	46.0	51.1
Camden (M)	4	125	383	55	1,148	1,138	1,102	3,388	30.6	29.4	29.4	29.8
Campbelltown (C)	3	122	399	32	1,604	1,566	1,713	4,883	43.8	41.4	46.8	44.0
Gosford (C)	24	817	2,813	657	13,640	10,065	11,356	35,061	55.7	39.7	46.3	47.2
Hawkesbury (C)	11	275	728	157	3,470	3,511	3,490	10,471	42.1	41.2	42.3	41.8
Hornsby (S)	7	231	594	187	4,226	3,320	4,505	12,051	61.0	46.4	65.0	57.3
Lane Cove (M)	7	264	720	146	5,725	5,418	5,939	17,082	72.3	66.2	75.0	71.1
Leichhardt (M)	4	151	411	71	3,090	2,915	2,965	8,970	68.2	62.3	65.5	65.3
Liverpool (C)	6	291	785	89	3,677	3,262	4,095	11,034	42.1	36.2	46.9	41.7
Manly (M)	7	424	1,328	399	8,789	7,808	8,001	24,598	69.1	59.4	62.9	63.8
North Sydney (M)	6	751	1,974	396	15,870	15,192	14,820	45,882	70.4	65.3	65.8	67.1
Parramatta (C)	10	1,009	2,378	789	20,112	22,354	21,331	63,797	66.4	71.5	70.5	69.5
Penrith (C)	7	340	1,106	211	5,658	5,601	5,027	16,286	55.5	53.1	49.3	52.6
Pittwater (M)	4	76	186	160	1,068	990	1,027	3,085	46.8	42.0	45.0	44.6
Randwick (C)	12	757	2,459	477	15,033	13,524	13,527	42,084	66.2	57.6	59.6	61.1
Rockdale (M)	4	644	1,566	518	11,837	10,870	10,557	33,264	61.3	54.4	54.6	56.8
Ryde (C)	5	376	975	334	7,084	7,385	7,562	22,031	62.8	63.4	67.0	64.4
South Sydney (C)	38	4,466	11,990	2,229	87,155	78,293	78,775	244,223	65.1	56.6	58.8	60.1
Strathfield (M)	4	124	385	46	1,842	1,495	1,494	4,831	49.5	38.9	40.2	42.8
Sutherland (S)	10	299	760	224	4,358	4,270	3,329	11,957	48.6	46.1	37.1	43.9
Sydney (C) — Inner	23	6,570	14,545	6,195	140,811	132,944	128,040	401,795	71.4	65.3	65.0	67.2
Sydney (C) — Remainder	15	2,439	6,356	1,212	55,484	48,973	52,522	156,979	75.8	64.8	71.8	70.7
Warringah (S)	7	102	289	254	1,089	791	1,327	3,207	35.6	25.0	43.4	34.6
Waverley (M)	8	463	1,389	255	9,822	8,855	8,746	27,423	70.7	61.7	63.0	65.1
Wollondilly (S)	3	64	162	35	457	459	395	1,311	23.8	23.1	20.6	22.5
Woolahra (M)	6	426	956	339	7,734	7,321	6,856	21,911	60.5	55.4	53.6	56.5
Wyong (S)	29	578	1,700	319	7,550	5,589	5,674	18,813	43.5	31.2	32.7	35.8
Balance	20	1,303	3,282	902	24,113	22,435	22,995	69,543	61.7	55.5	58.8	58.6
<i>Sydney (SD)</i>	<i>338</i>	<i>25,421</i>	<i>66,022</i>	<i>17,987</i>	<i>496,391</i>	<i>454,251</i>	<i>456,085</i>	<i>1,406,727</i>	<i>65.1</i>	<i>57.6</i>	<i>59.8</i>	<i>60.8</i>
HUNTER STATISTICAL DIVISION												
Cessnock (C)	22	407	1,189	312	7,375	5,987	6,027	19,389	60.4	47.5	49.4	52.4
Gloucester (S)	4	86	273	38	1,392	1,132	1,138	3,662	54.0	42.5	44.1	46.8
Great Lakes (S)	31	606	2,046	192	8,992	6,561	5,823	21,376	49.5	34.9	32.0	38.8
Lake Macquarie (C)	20	406	1,212	285	5,450	5,061	5,348	15,859	44.7	40.2	43.9	42.9
Maitland (C)	7	194	545	118	3,140	2,826	3,357	9,323	54.0	47.0	57.7	52.8
Muswellbrook (S)	9	225	667	73	3,058	3,974	3,749	10,781	45.3	57.0	55.5	52.7
Newcastle (C) — Inner & Remainder	20	794	2,273	342	12,875	14,183	13,307	40,365	54.1	57.6	55.9	55.9
Port Stephens (S)	29	821	2,661	532	14,126	9,978	10,396	34,500	57.4	39.2	42.2	46.2
Scone (S)	6	115	337	48	1,513	1,646	1,363	4,522	43.9	46.2	39.5	43.2
Singleton (S)	7	241	739	144	4,217	4,651	5,017	13,885	58.3	62.3	69.4	63.3
Balance	5	63	177	13	998	999	975	2,972	52.8	51.2	51.6	51.8
<i>Hunter (SD)</i>	<i>160</i>	<i>3,958</i>	<i>12,119</i>	<i>2,097</i>	<i>63,136</i>	<i>56,998</i>	<i>56,500</i>	<i>176,634</i>	<i>53.2</i>	<i>46.5</i>	<i>47.6</i>	<i>49.0</i>
ILLAWARRA STATISTICAL DIVISION												
Kiama (M)	10	281	988	139	4,128	2,573	2,717	9,418	49.0	29.5	32.2	36.8
Shellharbour (M)	4	86	242	69	668	728	817	2,213	25.9	27.3	31.7	28.3
Shoalhaven (C)	56	926	2,904	305	12,036	8,674	8,248	28,958	44.1	30.9	30.3	35.1
Wingecarribee (S)	29	759	2,005	436	13,445	12,780	12,338	38,563	59.0	54.3	54.2	55.8
Wollongong (C)	23	776	2,234	535	11,893	14,368	11,582	37,843	51.1	59.7	49.8	53.6
<i>Illawarra (SD)</i>	<i>122</i>	<i>2,828</i>	<i>8,373</i>	<i>1,484</i>	<i>42,170</i>	<i>39,123</i>	<i>35,702</i>	<i>116,995</i>	<i>50.0</i>	<i>44.9</i>	<i>42.4</i>	<i>45.8</i>

For footnotes see end of table.

AND SELECTED STATISTICAL LOCAL AREAS (a), NEW SOUTH WALES, JUNE QUARTER 1994

<i>Guest nights</i>				<i>Guest arrivals</i>				<i>Takings from accommodation (\$'000)</i>			
<i>Apr.</i>	<i>May</i>	<i>June</i>	<i>June qtr</i>	<i>Apr.</i>	<i>May</i>	<i>June</i>	<i>June qtr</i>	<i>Apr.</i>	<i>May</i>	<i>June</i>	<i>June qtr</i>
SYDNEY STATISTICAL DIVISION											
7,812	6,377	7,462	21,651	4,988	4,282	5,056	14,326	266	237	217	719
8,220	7,440	9,508	25,168	3,916	3,685	4,362	11,963	474	447	489	1,410
7,975	5,125	6,985	20,085	4,909	3,235	4,372	12,516	232	178	236	646
38,799	28,299	30,075	97,173	18,180	14,617	14,839	47,636	2,147	1,708	1,659	5,515
2,167	2,205	2,046	6,418	1,579	1,652	1,481	4,712	66	62	62	190
2,409	2,244	2,542	7,195	1,903	1,727	1,875	5,505	111	107	114	332
27,205	18,188	21,478	66,871	12,563	9,564	10,348	32,475	1,362	893	947	3,203
5,796	5,395	5,653	16,844	3,548	3,446	3,229	10,223	270	298	303	872
7,237	5,401	7,280	19,918	4,230	3,172	4,422	11,824	357	283	391	1,032
8,745	7,557	8,832	25,134	3,890	3,468	4,050	11,408	483	470	500	1,453
5,872	4,855	5,422	16,149	3,359	2,604	2,838	8,801	262	239	250	752
5,888	5,202	7,215	18,305	4,078	3,610	4,585	12,273	245	215	281	741
14,852	11,432	12,388	38,672	5,692	4,748	5,259	15,699	1,046	917	901	2,864
21,762	20,895	20,324	62,981	10,408	10,164	10,086	30,658	1,596	1,667	1,579	4,841
28,597	28,330	30,578	87,505	12,546	14,031	14,123	40,700	1,653	1,865	1,821	5,340
11,015	9,256	9,752	30,023	5,144	4,503	5,181	14,828	474	437	421	1,332
1,816	1,262	1,424	4,502	1,297	1,090	1,224	3,611	109	100	105	314
25,571	20,668	21,273	67,512	8,605	8,130	7,315	24,050	1,336	1,173	1,165	3,674
18,730	16,039	15,972	50,741	12,708	11,363	10,761	34,832	1,255	1,192	1,112	3,559
12,208	11,945	13,350	37,503	3,873	3,608	3,733	11,214	827	909	923	2,659
162,653	140,460	144,468	447,581	60,791	54,126	55,830	170,747	7,711	6,795	6,749	21,255
3,092	2,423	2,331	7,846	1,849	1,438	1,648	4,935	128	108	112	348
7,140	6,431	5,040	18,611	3,552	2,428	2,506	8,486	357	345	269	971
234,711	213,486	202,574	650,771	93,410	91,826	87,717	272,953	20,646	19,526	17,574	57,746
97,284	79,707	88,915	265,906	38,354	31,843	35,599	105,796	5,639	4,949	5,244	15,831
1,769	1,114	1,747	4,630	741	514	812	2,067	58	38	68	164
17,343	14,295	14,554	46,192	5,190	4,472	3,893	13,555	758	712	681	2,151
664	662	719	2,045	438	387	298	1,123	29	30	23	82
12,084	10,619	11,051	33,754	4,222	4,415	4,564	13,201	856	816	760	2,432
16,263	10,588	10,909	37,760	8,023	6,069	6,170	20,262	576	389	406	1,371
34,556	30,108	32,447	97,111	20,905	18,287	19,409	58,601	2,063	1,972	2,024	6,059
850,235	728,008	754,314	2,332,557	364,891	328,504	337,585	1,030,980	53,392	49,077	47,387	149,856
HUNTER STATISTICAL DIVISION											
13,941	10,612	11,254	35,807	8,066	6,867	6,801	21,734	832	658	663	2,153
2,983	2,348	2,420	7,751	1,303	1,042	1,160	3,505	77	57	64	198
19,156	11,942	11,071	42,169	11,011	8,177	7,337	26,525	503	323	291	1,117
8,640	6,981	8,399	24,020	5,119	4,356	4,866	14,341	398	381	390	1,168
5,271	4,661	5,699	15,631	3,802	3,467	4,291	11,560	208	178	216	603
5,841	5,812	5,880	17,533	3,565	3,629	3,573	10,767	180	206	190	576
20,655	20,417	19,851	60,923	10,166	9,618	10,281	30,065	951	1,067	981	2,999
30,336	18,349	21,026	69,711	14,325	10,189	12,111	36,625	1,255	755	834	2,844
2,517	2,581	2,045	7,143	2,181	2,009	1,661	5,851	92	91	77	260
6,905	7,190	7,777	21,872	3,940	3,669	4,096	11,705	276	303	322	901
1,905	1,633	1,699	5,237	1,508	1,205	1,400	4,113	43	40	41	123
118,150	92,526	97,121	307,797	64,986	54,228	57,577	176,791	4,815	4,058	4,069	12,943
ILLAWARRA STATISTICAL DIVISION											
8,387	4,625	5,010	18,022	5,267	3,527	3,833	12,627	258	147	167	572
1,197	1,080	1,292	3,569	920	650	822	2,392	33	33	38	104
25,245	15,404	14,746	55,395	14,638	9,741	9,453	33,832	759	511	517	1,787
26,166	20,444	21,712	68,322	14,836	11,455	12,206	38,497	1,224	1,038	1,193	3,455
21,171	21,788	18,050	61,009	11,041	10,889	9,792	31,722	1,019	1,088	1,420	3,527
82,166	63,341	60,810	206,317	46,702	36,262	36,106	119,070	3,293	2,817	3,335	9,445

TABLE 8 — HOTELS, MOTELS AND GUEST HOUSES WITH FACILITIES: STATISTICAL DIVISIONS

Statistical Divisions and selected Statistical Local Areas	Establish- ments	Guest rooms	Bed spaces	Employ- ment (persons)	Room nights occupied				Room occupancy rates (per cent)			
					Apr.	May	June	June qtr	Apr.	May	June	June qtr
RICHMOND — TWEED STATISTICAL DIVISION												
Ballina (S)	26	481	1,518	157	8,249	7,477	8,535	24,261	57.2	50.1	59.1	55.4
Byron (S)	24	394	1,387	177	5,649	3,936	4,801	14,386	47.8	32.2	40.6	40.1
Casino (M)	5	101	308	29	1,411	1,337	1,472	4,220	46.6	42.7	48.6	45.9
Lismore (C)	12	273	822	84	3,572	3,365	4,076	11,013	43.6	39.8	49.8	44.3
Tweed (S) Parts A & B	39	728	2,326	249	10,859	8,895	10,205	29,959	49.7	39.4	46.7	45.2
Balance	4	44	131	12	537	481	518	1,536	40.7	35.3	39.2	38.4
<i>Richmond — Tweed (SD)</i>	<i>110</i>	<i>2,021</i>	<i>6,492</i>	<i>708</i>	<i>30,277</i>	<i>25,491</i>	<i>29,607</i>	<i>85,375</i>	<i>49.9</i>	<i>40.7</i>	<i>48.8</i>	<i>46.4</i>
MID-NORTH COAST STATISTICAL DIVISION												
Bellingen (S)	6	90	271	38	1,498	1,169	1,146	3,813	55.5	41.9	42.4	46.6
Coffs Harbour (C)	53	1,471	4,940	785	25,691	21,127	22,415	69,233	58.2	46.3	50.8	51.7
Grafton (C)	15	319	854	126	5,878	5,151	5,506	16,535	61.4	52.1	57.5	57.0
Hastings (M)	45	965	3,171	450	16,997	13,713	14,738	45,448	58.7	45.8	50.9	51.8
Kempsey (S)	17	373	1,096	128	4,765	4,384	4,243	13,392	42.6	37.9	37.9	39.5
Maclean (S)	13	174	549	47	2,328	1,790	2,083	6,201	44.6	33.2	39.9	39.2
Nambucca (S)	14	240	757	95	3,475	3,368	2,802	9,645	48.3	45.3	38.9	44.2
Taree, Greater (C)	26	452	1,395	125	7,504	6,895	6,664	21,063	55.3	49.2	49.1	51.2
Balance	4	69	194	71	1,504	837	865	3,206	72.7	39.1	41.8	51.1
<i>Mid-North Coast (SD)</i>	<i>193</i>	<i>4,153</i>	<i>13,227</i>	<i>1,865</i>	<i>69,640</i>	<i>58,434</i>	<i>60,462</i>	<i>188,536</i>	<i>55.9</i>	<i>45.4</i>	<i>48.5</i>	<i>49.9</i>
NORTHERN STATISTICAL DIVISION												
Armidale (C)	17	425	1,400	154	8,820	7,301	7,382	23,503	69.2	55.4	57.9	60.8
Dumaresq (S)	3	42	139	26	1,009	834	895	2,738	80.1	64.1	71.0	71.6
Glen Innes (M)	10	202	611	81	3,506	2,703	2,462	8,671	57.9	43.2	40.6	47.2
Gunnedah (S)	7	141	423	30	2,545	2,249	2,069	6,863	60.2	51.5	48.9	53.5
Inverell (S) Parts A & B	6	131	351	48	2,395	2,220	1,782	6,397	60.9	54.7	45.3	53.7
Moree Plains (S)	17	447	1,307	101	7,095	6,561	6,168	19,824	52.9	47.3	46.0	48.7
Narrabri (S)	11	191	591	64	2,991	3,028	3,005	9,024	52.2	51.1	52.4	51.9
Tamworth (C)	29	759	2,426	309	13,346	12,669	13,551	39,566	58.6	53.8	59.5	57.3
Tenterfield (S)	8	158	458	56	2,443	2,244	2,203	6,890	51.5	45.8	46.5	47.9
Uralla (S)	3	45	116	14	634	535	586	1,755	47.0	38.4	43.4	42.9
Balance	15	189	539	59	2,412	2,016	2,008	6,436	42.5	34.4	35.4	37.4
<i>Northern (SD)</i>	<i>126</i>	<i>2,730</i>	<i>8,361</i>	<i>942</i>	<i>47,196</i>	<i>42,360</i>	<i>42,111</i>	<i>131,667</i>	<i>57.6</i>	<i>50.1</i>	<i>51.4</i>	<i>53.0</i>
NORTH WESTERN AND FAR WEST STATISTICAL DIVISIONS												
Bogan (S)	5	114	300	34	1,245	1,279	1,265	3,789	36.4	36.2	37.0	36.5
Bourke (S)	4	63	178	15	1,250	1,097	1,275	3,622	66.1	56.2	67.5	63.2
Broken Hill (C)	13	322	923	96	5,647	6,241	5,168	17,056	58.5	62.5	53.5	58.2
Central Darling (S)	3	38	110	13	519	530	529	1,578	45.5	45.0	46.4	45.6
Cobar (S)	7	178	520	80	2,110	2,596	2,558	7,264	39.5	47.0	47.9	44.8
Coonabarabran (S)	11	272	918	93	4,863	3,653	4,056	12,572	59.6	43.3	49.7	50.8
Coonamble (S)	3	51	135	11	591	777	795	2,163	38.6	49.1	52.0	46.6
Dubbo (C)	32	809	2,674	430	18,210	15,375	17,460	51,045	75.0	61.3	71.9	69.3
Gilgandra (S)	9	147	479	36	2,559	1,945	2,557	7,061	58.0	42.7	58.0	52.8
Mudgee (S)	13	333	1,153	169	6,527	5,309	5,541	17,377	65.3	51.4	55.5	57.3
Narromine (S)	5	79	219	40	1,094	669	948	2,711	46.2	27.3	40.0	37.7
Walgett (S)	7	168	475	67	2,541	2,708	2,765	8,014	50.4	52.0	54.9	52.4
Wellington (S)	5	73	212	15	1,044	963	901	2,908	47.7	42.6	41.1	43.8
Balance	6	75	209	21	1,138	1,062	1,058	3,258	50.6	45.7	47.0	47.7
<i>North Western (SD) and Far West (SD)</i>	<i>123</i>	<i>2,722</i>	<i>8,505</i>	<i>1,120</i>	<i>49,338</i>	<i>44,204</i>	<i>46,876</i>	<i>140,418</i>	<i>60.4</i>	<i>52.4</i>	<i>57.4</i>	<i>56.7</i>

For footnotes see end of table.

TABLE 10 — HOLIDAY FLATS, UNITS AND HOUSES: SELECTED STATISTICAL DIVISIONS

Statistical Divisions and Selected Statistical Local Areas	Flats, units and houses				Bed spaces	Employment (persons) (b)	Unit nights occupied			
	Letting entities	Single bedroom	Multiple bedroom	Total			Apr.	May	June	June qtr
Blue Mountains (C)	9	30	175	205	1,172	30	2,963	1,934	2,479	7,376
Gosford (C)	9	11	503	514	2,861	2	2,669	929	1,100	4,698
Manly (M)	4	60	78	138	521	19	3,131	2,843	2,779	8,753
South Sydney (C)	8	232	86	318	939	81	6,086	5,543	5,939	17,568
Sydney (C)	7	163	29	192	585	37	4,011	3,986	3,923	11,920
Wyong (S)	11	62	272	334	1,667	19	3,746	1,853	2,080	7,679
Balance	13	263	168	431	1,601	60	8,857	8,093	8,264	25,214
<i>Sydney (SD)</i>	<i>61</i>	<i>821</i>	<i>1,311</i>	<i>2,132</i>	<i>9,346</i>	<i>248</i>	<i>31,463</i>	<i>25,181</i>	<i>26,564</i>	<i>83,208</i>
Cessnock (C), Newcastle (C) and Lake Macquarie (C)	5	3	45	48	279	12	824	646	739	2,209
Great Lakes (S)	20	54	1,142	1,196	5,681	13	16,255	8,109	7,541	31,905
Port Stephens (S)	8	35	734	769	3,885	—	8,725	4,275	4,661	17,661
<i>Hunter (SD)</i>	<i>33</i>	<i>92</i>	<i>1,921</i>	<i>2,013</i>	<i>9,845</i>	<i>25</i>	<i>25,804</i>	<i>13,030</i>	<i>12,941</i>	<i>51,775</i>
<i>Illawarra (SD)</i>	<i>29</i>	<i>76</i>	<i>600</i>	<i>676</i>	<i>3,583</i>	<i>48</i>	<i>5,077</i>	<i>2,158</i>	<i>2,577</i>	<i>9,812</i>
Ballina (S) and Richmond River (S)	13	17	290	307	1,428	11	3,891	2,943	4,892	11,726
Byron (S)	16	52	336	388	1,979	29	6,018	4,085	4,412	14,515
Tweed (S) Parts A & B	17	36	234	270	1,233	30	3,275	2,365	2,623	8,263
<i>Richmond — Tweed (SD)</i>	<i>46</i>	<i>105</i>	<i>860</i>	<i>965</i>	<i>4,640</i>	<i>70</i>	<i>13,184</i>	<i>9,393</i>	<i>11,927</i>	<i>34,504</i>
Coffs Harbour (C)	28	72	337	409	1,734	79	5,467	4,344	4,734	14,545
Greater Taree (C)	4	30	1	31	117	7	169	206	128	503
Hastings (M)	24	60	527	587	2,489	43	8,344	5,852	6,050	20,246
Kempsey (S)	14	66	283	349	1,709	17	4,906	4,397	3,591	12,894
Maclean (S)	7	21	302	323	1,367	2	3,293	2,424	3,295	9,012
Nambucca (S)	4	11	21	32	124	5	552	346	408	1,306
Balance	8	75	24	99	359	28	1,848	977	797	3,622
<i>Mid-North Coast (SD)</i>	<i>89</i>	<i>335</i>	<i>1,495</i>	<i>1,830</i>	<i>7,899</i>	<i>181</i>	<i>24,579</i>	<i>18,546</i>	<i>19,003</i>	<i>62,128</i>
Bega Valley (S)	65	69	988	1,057	4,857	160	16,975	12,911	12,122	42,008
Eurobodalla (S)	34	103	769	872	4,028	63	7,525	5,059	4,091	16,675
Balance	20	137	396	533	2,979	103	3,013	1,799	2,741	7,553
<i>South Eastern (SD)</i>	<i>119</i>	<i>309</i>	<i>2,153</i>	<i>2,462</i>	<i>11,864</i>	<i>326</i>	<i>27,513</i>	<i>19,769</i>	<i>18,954</i>	<i>66,236</i>
Berrigan (S)	3	25	11	36	126	5	771	636	406	1,813
Corowa (S)	7	72	24	96	374	134	2,253	2,112	1,956	6,321
Murray (S), Wakool (S) and Wentworth (S)	9	10	53	63	300	23	1,450	1,182	912	3,544
<i>Murray (SD)</i>	<i>19</i>	<i>107</i>	<i>88</i>	<i>195</i>	<i>800</i>	<i>162</i>	<i>4,474</i>	<i>3,930</i>	<i>3,274</i>	<i>11,678</i>
Balance of State	9	67	22	89	338	21	1,477	1,244	1,344	4,065
NEW SOUTH WALES	405	1,912	8,450	10,362	48,315	1,081	133,571	93,251	96,584	323,406

(a) Statistical Local Areas are not shown separately in this table when data for them are confidential or nil. Data for these are aggregated and shown as the Balance of the particular Statistical Division. Likewise, data for Statistical Divisions not specifically identified are nil or included in Balance of State. (b) Employment numbers exclude real estate agents and their employees.

AND STATISTICAL LOCAL AREAS (a), NEW SOUTH WALES, JUNE QUARTER 1994

<i>Unit occupancy rates (per cent)</i>				<i>Unit lettings</i>				<i>Average length of stay (days)</i>	<i>Takings from accommodation (\$'000)</i>			
<i>Apr.</i>	<i>May</i>	<i>June</i>	<i>June qtr</i>	<i>Apr.</i>	<i>May</i>	<i>June</i>	<i>June qtr</i>	<i>June qtr</i>	<i>Apr.</i>	<i>May</i>	<i>June</i>	<i>June qtr</i>
48.2	30.4	40.3	39.5	782	596	671	2,049	3.6	186	124	169	479
17.3	5.8	7.1	10.0	447	138	204	789	6.0	156	36	45	236
75.6	66.5	67.1	69.7	662	452	556	1,670	5.2	302	271	280	853
63.8	56.2	62.3	60.7	1,343	1,313	1,367	4,023	4.4	522	479	519	1,520
69.6	67.0	68.1	68.2	864	780	792	2,436	4.9	373	371	359	1,103
37.7	18.2	21.0	25.6	798	451	496	1,745	4.4	201	85	96	382
68.5	60.6	63.9	64.3	2,095	1,833	1,914	5,842	4.3	864	816	872	2,551
49.3	38.2	41.6	43.0	6,991	5,563	6,000	18,554	4.5	2,605	2,181	2,339	7,125
57.2	43.4	51.3	50.6	258	255	271	784	2.8	97	78	92	267
45.3	21.9	21.0	29.3	2,226	1,009	1,039	4,274	7.5	622	245	204	1,071
37.8	17.9	20.2	25.2	1,093	541	698	2,332	7.6	401	105	154	660
42.7	20.9	21.4	28.3	3,577	1,805	2,008	7,390	7.0	1,120	428	450	1,998
25.0	10.3	12.7	16.0	1,094	587	608	2,289	4.3	312	117	139	568
42.2	30.9	53.1	42.0	482	371	542	1,395	8.4	135	90	150	375
51.7	34.0	37.9	41.1	1,082	729	807	2,618	5.5	410	207	239	856
40.4	28.3	32.4	33.6	471	252	344	1,067	7.7	137	82	97	315
45.5	31.4	41.2	39.3	2,035	1,352	1,693	5,080	6.8	682	379	485	1,546
44.6	34.3	38.6	39.1	1,241	760	1,019	3,020	4.8	256	182	209	647
18.2	21.4	13.8	17.8	33	30	29	92	5.5	5	5	4	14
47.4	32.2	34.4	37.9	1,052	732	844	2,628	7.7	308	191	188	687
46.9	40.6	34.3	40.6	682	491	464	1,637	7.9	225	140	128	493
34.0	24.2	34.0	30.7	467	328	414	1,209	7.5	115	89	116	320
57.5	34.9	42.5	44.8	81	63	65	209	6.2	25	13	18	56
62.2	31.8	26.8	40.2	269	160	129	558	6.5	140	44	40	224
44.8	32.7	34.6	37.3	3,825	2,564	2,964	9,353	6.6	1,073	665	703	2,442
53.5	39.4	38.2	43.7	2,702	1,797	1,813	6,312	6.7	810	461	435	1,706
28.8	18.8	15.7	21.1	1,585	1,267	1,080	3,932	4.2	319	173	141	633
18.8	10.9	17.1	15.6	921	522	930	2,373	3.2	229	131	268	629
37.3	25.9	25.7	29.6	5,208	3,586	3,823	12,617	5.2	1,358	765	845	2,968
71.4	57.0	37.6	55.3	187	157	114	458	4.0	39	25	19	83
78.2	71.0	67.9	72.4	589	548	612	1,749	3.6	99	96	97	292
76.7	60.5	48.3	61.8	391	311	245	947	3.7	92	66	56	214
76.5	65.0	56.0	65.8	1,167	1,016	971	3,154	3.7	230	187	172	589
55.3	45.1	50.3	50.2	708	573	574	1,855	2.2	67	57	65	189
43.0	29.1	31.1	34.3	24,605	17,046	18,641	60,292	5.4	7,447	4,779	5,197	17,423

TABLE 11 — CARAVAN PARKS: STATISTICAL DIVISIONS AND SELECTED

Statistical Divisions and Selected Statistical Local Areas	Establish- ments	Capacity				Cabins, flats etc.	Total	Sites occupied by long-term guests	Other sites perman- ently reserved	Employ- ment (persons)
		On-site vans	Other powered sites	Unpow- ered sites						
Baulkham Hills (S)	10	34	589	118	—	741	28	257	20	
Camden (M)	3	41	408	—	—	449	305	—	10	
Gosford (C)	12	54	1,551	205	49	1,859	544	569	53	
Hawkesbury (C)	8	79	530	104	10	723	127	166	26	
Sutherland (S)	6	101	237	5	58	401	221	8	18	
Wyong (S)	33	362	4,063	378	149	4,952	1,021	2,112	144	
Balance	21	596	1,816	180	195	2,787	1,223	11	134	
<i>Sydney (SD)</i>	<i>93</i>	<i>1,267</i>	<i>9,194</i>	<i>990</i>	<i>461</i>	<i>11,912</i>	<i>3,469</i>	<i>3,123</i>	<i>405</i>	
Cessnock (C)	4	44	164	30	18	256	92	6	10	
Great Lakes (S)	26	190	3,032	621	214	4,057	528	1,548	123	
Lake Macquarie (C)	18	177	1,878	219	76	2,350	1,074	350	82	
Muswellbrook (S)	4	73	164	28	14	279	99	—	11	
Port Stephens (S)	19	120	2,651	294	114	3,179	498	1,357	102	
Scone (S)	3	28	72	37	10	147	13	28	16	
Singleton (S)	3	35	140	4	10	189	63	1	10	
Balance	12	86	525	452	28	1,091	89	217	34	
<i>Hunter (SD)</i>	<i>89</i>	<i>753</i>	<i>8,626</i>	<i>1,685</i>	<i>484</i>	<i>11,548</i>	<i>2,456</i>	<i>3,507</i>	<i>388</i>	
Kiama (M)	7	102	1,460	342	16	1,920	28	1,110	31	
Shellharbour (M)	3	54	545	240	8	847	151	208	15	
Shoalhaven (C) & Wingecarribee (S)	76	460	7,707	1,935	355	10,457	708	5,759	255	
Wollongong (C)	7	81	1,557	158	118	1,914	467	709	44	
<i>Illawarra (SD)</i>	<i>93</i>	<i>697</i>	<i>11,269</i>	<i>2,675</i>	<i>497</i>	<i>15,138</i>	<i>1,354</i>	<i>7,786</i>	<i>345</i>	
Ballina (S)	13	107	1,170	273	80	1,630	616	135	46	
Byron (S)	12	63	768	712	111	1,654	284	62	31	
Lismore (C)	5	100	231	31	63	425	209	2	26	
Richmond River (S)	5	35	497	205	19	756	80	120	11	
Tweed (S) Pts A & B	30	198	3,155	341	151	3,845	1,509	695	128	
Balance	4	16	166	75	6	263	62	1	8	
<i>Richmond — Tweed (SD)</i>	<i>69</i>	<i>519</i>	<i>5,987</i>	<i>1,637</i>	<i>430</i>	<i>8,573</i>	<i>2,760</i>	<i>1,015</i>	<i>250</i>	
Bellingen (S)	9	61	611	148	27	847	178	122	23	
Coffs Harbour (C)	21	232	1,682	434	202	2,550	679	63	113	
Hastings (M)	29	338	2,054	627	173	3,192	767	163	112	
Kempsey (S)	13	173	973	409	18	1,573	160	176	37	
Maclean (S)	18	90	1,171	420	132	1,813	344	49	67	
Nambucca (S)	9	97	1,048	226	101	1,472	321	105	44	
Taree, Greater (C)	16	222	1,521	283	72	2,098	354	463	55	
Ullmarra (S)	7	38	491	365	40	934	246	145	27	
Balance	5	42	265	52	23	382	84	43	14	
<i>Mid-North Coast (SD)</i>	<i>127</i>	<i>1,293</i>	<i>9,816</i>	<i>2,964</i>	<i>788</i>	<i>14,861</i>	<i>3,133</i>	<i>1,329</i>	<i>492</i>	
Glen Innes (M)	6	32	143	75	26	276	23	—	19	
Inverell (S)										
Pts A & B	4	45	88	21	9	163	53	—	7	
Moree Plains (S)	5	43	245	68	62	418	69	2	11	
Narrabri (S)	8	39	169	36	47	291	53	4	21	
Tamworth (C)	4	62	274	479	25	840	106	1	14	
Tenterfield (S)	4	31	73	20	13	137	—	—	7	
Balance	25	188	856	701	96	1,841	192	142	67	
<i>Northern (SD)</i>	<i>56</i>	<i>440</i>	<i>1,848</i>	<i>1,400</i>	<i>278</i>	<i>3,966</i>	<i>496</i>	<i>149</i>	<i>146</i>	

For footnotes see end of table.

STATISTICAL LOCAL AREAS (a), NEW SOUTH WALES, JUNE QUARTER 1994

<i>Site nights occupied</i>				<i>Site occupancy rates (per cent)</i>				<i>Takings from accommodation (\$'000)</i>			
<i>Apr.</i>	<i>May</i>	<i>June</i>	<i>June qtr</i>	<i>Apr.</i>	<i>May</i>	<i>June</i>	<i>June qtr</i>	<i>Apr.</i>	<i>May</i>	<i>June</i>	<i>June qtr</i>
9,170	9,128	8,940	27,238	41.3	39.7	40.2	40.4	51	39	38	129
9,170	9,492	9,220	27,882	68.1	68.2	68.4	68.2	86	83	99	267
38,114	37,091	36,125	111,330	68.3	64.4	64.8	65.8	371	316	331	1,017
9,122	9,291	9,200	27,613	42.1	41.5	42.4	42.0	40	41	40	122
9,709	9,509	9,574	28,792	80.7	76.5	79.6	78.9	146	148	138	432
104,519	103,210	100,837	308,566	70.4	67.2	67.9	68.5	851	664	689	2,203
59,391	55,669	54,026	169,086	71.0	64.4	64.6	66.7	960	826	821	2,607
239,195	233,390	227,922	700,507	66.9	63.2	63.8	64.6	2,505	2,116	2,156	6,777
3,777	3,466	3,317	10,560	49.2	43.7	43.2	45.3	47	38	46	132
78,252	72,563	68,915	219,730	64.3	57.7	56.6	59.5	694	449	467	1,610
51,223	49,322	48,658	149,203	72.7	67.7	69.0	69.8	529	459	461	1,449
3,851	3,789	3,841	11,481	46.0	43.8	45.9	45.2	40	40	46	126
66,791	62,317	60,507	189,615	70.0	63.2	63.4	65.5	593	427	447	1,468
2,961	1,947	1,846	6,754	67.1	42.7	41.9	50.5	23	12	14	49
1,930	2,017	1,950	5,897	34.0	34.4	34.4	34.3	15	15	14	45
13,204	10,766	11,014	34,984	40.3	31.8	33.7	35.2	122	82	94	299
221,989	206,187	200,048	628,224	64.1	57.6	57.7	59.8	2,063	1,523	1,589	5,175
39,820	37,273	37,314	114,407	69.1	62.6	64.8	65.5	269	214	212	695
11,638	11,362	11,344	34,344	45.8	43.3	44.6	44.6	132	79	80	290
217,857	209,680	204,216	631,753	69.4	64.7	65.1	66.4	1,596	1,082	1,080	3,758
39,763	40,252	38,748	118,763	69.2	67.8	67.5	68.2	384	459	304	1,147
309,078	298,567	291,622	899,267	68.1	63.6	64.2	65.3	2,381	1,834	1,676	5,891
27,436	26,609	26,878	80,923	56.1	52.7	55.0	54.6	279	244	269	791
21,980	20,124	20,481	62,585	44.3	39.2	41.3	41.6	281	236	255	772
9,991	10,816	9,543	30,350	78.4	82.1	74.8	78.5	86	92	84	262
8,202	8,461	8,686	25,349	36.2	36.1	38.3	36.8	62	49	55	166
83,174	80,668	86,181	250,023	72.1	67.7	74.7	71.5	783	727	876	2,386
2,306	2,292	2,216	6,814	29.2	28.1	28.1	28.5	20	21	20	61
153,089	148,970	153,985	456,044	59.5	56.1	59.9	58.5	1,511	1,368	1,560	4,439
12,531	12,238	11,461	36,230	49.3	46.6	45.1	47.0	80	72	73	225
35,013	31,867	34,807	101,687	45.8	40.3	45.5	43.8	393	337	375	1,106
41,951	38,373	38,464	118,788	43.8	38.8	40.2	40.9	563	410	465	1,438
18,652	16,762	15,679	51,093	39.5	34.4	33.2	35.7	153	128	121	402
19,536	18,044	21,754	59,334	35.9	32.1	40.0	36.0	252	201	267	720
18,768	17,002	16,725	52,495	42.5	37.3	37.9	39.2	188	152	154	493
30,690	28,502	27,822	87,014	48.8	43.8	44.2	45.6	220	155	171	546
14,372	13,884	14,154	42,410	51.3	48.0	50.5	49.9	147	113	131	392
4,678	4,484	4,662	13,824	40.8	37.9	40.7	39.8	52	41	53	146
196,191	181,156	185,528	562,875	44.0	39.3	41.6	41.6	2,048	1,610	1,810	5,468
1,566	1,328	1,200	4,094	18.9	15.5	14.5	16.3	26	17	16	59
2,616	2,510	2,288	7,414	53.5	49.7	46.8	50.0	29	26	21	75
3,701	4,094	4,604	12,399	29.5	31.6	36.7	32.6	50	55	61	165
3,683	4,098	3,767	11,548	42.2	45.4	43.2	43.6	48	54	54	156
5,056	4,849	4,963	14,868	20.1	18.6	19.7	19.5	67	66	68	202
940	673	626	2,239	22.9	15.8	15.2	18.0	19	10	11	40
16,295	15,041	14,099	45,435	29.5	26.4	25.5	27.1	112	92	86	290
33,857	32,593	31,547	97,997	28.5	26.5	26.5	27.2	351	319	317	987

TABLE 11 — CARAVAN PARKS: STATISTICAL DIVISIONS AND SELECTED

Statistical Divisions and Selected Statistical Local Areas	Capacity					Total	Sites occupied by long-term guests	Other sites perman- ently reserved	Employ- ment (persons)
	Establish- ments	On-site vans	Other powered sites	Unpow- ered sites	Cabins, flats, etc.				
Bourke (S)	3	27	76	66	8	177	8	2	5
Dubbo (C)	5	123	232	144	33	532	91	2	26
Gulgandra (S)	4	17	98	17	20	152	10	1	8
Mudgee (S)	6	77	310	417	81	885	129	274	18
Narromine (S)	5	38	156	65	10	269	12	—	9
Walgett (S)	5	30	140	140	23	333	55	2	10
Wellington (S)	4	36	132	295	28	491	9	73	16
Balance	13	70	434	1,247	25	1,776	67	1	41
<i>North Western (SD)</i>	<i>45</i>	<i>418</i>	<i>1,578</i>	<i>2,391</i>	<i>228</i>	<i>4,615</i>	<i>381</i>	<i>355</i>	<i>133</i>
Cowra (S)	4	32	270	270	43	615	18	91	17
Forbes (S)	4	17	117	67	39	240	51	—	15
Parkes (S)	6	56	149	23	31	259	57	3	12
Balance	18	96	727	780	63	1,666	217	4	52
<i>Central West (SD)</i>	<i>32</i>	<i>201</i>	<i>1,263</i>	<i>1,140</i>	<i>176</i>	<i>2,780</i>	<i>343</i>	<i>98</i>	<i>96</i>
Bega Valley (S)	25	277	2,696	1,343	219	4,535	182	613	122
Eurobodalla (S)	27	240	2,899	720	203	4,062	338	1,667	136
Goulburn (C)	3	34	130	16	25	205	36	—	10
Queanbeyan (C) & Yarrowlumla (S)	4	37	272	83	101	493	129	—	22
Snowy River (S)	13	112	832	510	135	1,589	1	562	61
Yass (S)	4	19	358	270	35	682	43	226	16
Balance	10	48	285	277	22	632	29	151	20
<i>South Eastern (SD)</i>	<i>86</i>	<i>767</i>	<i>7,472</i>	<i>3,219</i>	<i>740</i>	<i>12,198</i>	<i>758</i>	<i>3,219</i>	<i>387</i>
Griffith (C)	3	14	103	100	26	243	36	—	7
Murrumbidgee (S)	3	25	74	35	—	134	34	2	4
Tumut (S)	5	22	279	90	38	429	3	34	13
Wagga Wagga (C)	8	100	169	77	52	398	93	2	31
Balance	17	74	509	261	72	916	44	4	42
<i>Murrumbidgee (SD)</i>	<i>36</i>	<i>235</i>	<i>1,134</i>	<i>563</i>	<i>188</i>	<i>2,120</i>	<i>210</i>	<i>42</i>	<i>97</i>
Albury (C)	5	66	218	90	60	434	108	3	16
Batrnald (S)	3	8	102	50	19	179	24	8	7
Berrigan (S)	7	20	503	40	34	597	47	244	26
Corowa (S)	10	17	1,185	170	94	1,466	54	806	37
Deniliquin (M)	6	30	453	183	29	695	41	243	15
Hume (S)	3	11	249	125	123	508	12	58	23
Murray (S)	10	15	1,236	207	84	1,542	80	1,013	50
Wakool (S)	4	14	170	36	27	247	12	64	7
Wentworth (S)	6	58	254	58	44	414	71	1	15
Balance	7	25	193	77	8	303	10	7	15
<i>Murray (SD)</i>	<i>61</i>	<i>264</i>	<i>4,563</i>	<i>1,036</i>	<i>522</i>	<i>6,385</i>	<i>459</i>	<i>2,447</i>	<i>211</i>
<i>Far West (SD)</i>	<i>7</i>	<i>39</i>	<i>487</i>	<i>87</i>	<i>60</i>	<i>673</i>	<i>12</i>	<i>156</i>	<i>24</i>
<i>New South Wales</i>									
Short-term parks	469	3,244	42,593	14,999	2,916	63,752	3,557	21,892	1,795
Long-term parks	325	3,649	20,644	4,788	1,936	31,017	12,274	1,334	1,179
Total	794	6,893	63,237	19,787	4,852	94,769	15,831	23,226	2,974

(a) Statistical Local Areas are not shown separately in this table when data for them are confidential or nil. Data for these are aggregated and shown as the Balance of the particular Statistical Division.

STATISTICAL LOCAL AREAS (a), NEW SOUTH WALES, JUNE QUARTER 1994—continued

<i>Site nights occupied</i>				<i>Site occupancy rates (per cent)</i>				<i>Takings from accommodation (\$'000)</i>			
<i>Apr.</i>	<i>May</i>	<i>June</i>	<i>June qtr</i>	<i>Apr.</i>	<i>May</i>	<i>June</i>	<i>June qtr</i>	<i>Apr.</i>	<i>May</i>	<i>June</i>	<i>June qtr</i>
457	503	462	1,422	8.6	9.2	8.7	8.8	5	5	5	16
7,824	7,381	7,665	22,870	49.0	44.8	48.0	47.2	135	127	139	402
941	817	1,080	2,838	20.6	17.3	23.7	20.5	16	11	16	43
17,123	16,569	16,096	49,788	64.5	60.4	60.6	61.8	93	82	77	253
1,316	1,186	1,074	3,576	16.3	14.2	13.3	14.6	11	9	8	29
3,783	3,481	4,078	11,342	37.9	33.7	40.8	37.4	40	40	50	130
4,150	3,389	3,397	10,936	28.2	22.3	23.1	24.5	48	23	19	89
6,951	5,862	5,573	18,386	13.0	10.6	10.5	11.4	85	64	72	220
42,545	39,188	39,425	121,158	30.7	27.4	28.5	28.8	433	362	387	1,182
5,021	3,955	3,801	12,777	27.2	20.7	20.6	22.8	56	53	36	144
2,574	2,829	2,520	7,923	35.8	38.0	35.0	36.3	43	41	38	122
2,954	2,649	2,830	8,433	38.0	33.0	36.4	35.8	47	41	42	130
13,719	10,841	10,817	35,377	27.4	21.0	21.6	23.3	155	125	132	412
24,268	20,274	19,968	64,510	29.1	23.5	23.9	25.5	301	259	248	808
45,390	33,058	31,894	110,342	33.4	23.5	23.4	26.7	528	227	212	967
75,005	69,872	72,202	217,079	61.6	55.5	59.2	58.7	602	401	408	1,410
2,933	2,492	2,296	7,721	47.7	39.2	37.3	41.4	43	35	34	112
6,395	5,286	5,105	16,786	43.2	34.6	34.5	37.4	129	104	105	339
21,751	19,282	19,955	60,988	45.6	39.1	41.9	42.2	171	93	148	412
9,649	9,116	8,944	27,709	47.2	43.1	43.7	44.6	76	37	50	164
7,004	6,493	6,073	19,570	36.9	33.1	32.0	34.0	40	26	30	96
168,127	145,599	146,469	460,195	45.9	38.5	40.0	41.5	1,589	924	987	3,499
2,428	2,561	2,193	7,182	33.3	34.0	30.1	32.5	29	31	26	86
1,530	1,217	1,133	3,880	38.1	29.3	28.2	31.8	11	9	9	29
4,671	2,472	1,959	9,102	36.3	18.6	15.2	23.3	75	32	23	130
7,609	5,616	5,710	18,935	63.7	45.5	47.8	52.3	73	59	60	192
7,306	5,964	5,712	18,982	26.6	21.0	20.8	22.8	120	95	91	305
23,544	17,830	16,707	58,081	37.0	27.1	26.3	30.1	309	227	207	743
7,303	6,013	5,765	19,081	56.1	44.7	44.3	48.3	119	83	82	283
1,504	1,340	1,373	4,217	28.0	24.1	25.6	25.9	11	8	9	28
12,429	10,979	10,953	34,361	69.4	59.3	61.2	63.2	73	44	53	171
30,776	29,373	29,742	89,891	70.0	64.6	67.6	67.4	165	104	114	383
10,896	9,345	9,181	29,422	52.3	43.4	44.0	46.5	55	26	29	110
3,590	2,311	2,283	8,184	23.6	14.7	15.0	17.7	55	12	15	82
37,683	37,675	36,196	111,554	81.5	78.8	78.2	79.5	185	148	133	466
4,116	3,428	3,070	10,614	55.5	44.8	41.4	47.2	45	25	23	93
5,273	3,987	3,416	12,676	42.5	31.1	27.5	33.6	55	36	37	127
2,062	1,534	1,412	5,008	22.7	16.3	15.5	18.2	18	11	10	39
115,632	105,985	103,391	325,008	60.4	53.5	54.0	55.9	781	496	506	1,783
8,906	8,334	8,823	26,063	44.1	39.9	43.7	42.6	85	65	111	262
1,045,161	954,810	949,841	2,949,812	54.6	48.3	49.7	50.8	8,955	6,106	6,392	21,453
491,260	483,263	475,594	1,450,117	52.8	50.3	51.1	51.4	5,402	4,996	5,162	15,560
1,536,421	1,438,073	1,425,435	4,399,929	54.0	49.0	50.1	51.0	14,357	11,102	11,555	37,014

TABLE 12 — CARAVAN PARKS (a) BY STATISTICAL DIVISION, NEW SOUTH WALES

Particulars	Sydney (SD)			Hunter (SD)			Illawarra (SD)			Richmond - Tweed (SD)		
	Short-term	Long-term	Total	Short-term	Long-term	Total	Short-term	Long-term	Total	Short-term	Long-term	Total
ESTABLISHMENTS, CAPACITY AND EMPLOYMENT												
<i>June quarter 1993—</i>												
Establishments	36	56	92	39	51	90	74	19	93	24	45	69
Capacity												
On-site vans	337	901	1,238	235	541	776	479	194	673	134	367	501
Other powered sites	4,175	4,963	9,138	4,565	3,944	8,509	8,880	2,126	11,006	2,263	3,853	6,116
Unpowered sites	779	479	1,258	1,227	584	1,811	2,377	397	2,774	1,007	651	1,658
Cabins, flats, etc.	185	275	460	224	221	445	393	70	463	124	267	391
<i>Total capacity</i>	<i>5,476</i>	<i>6,618</i>	<i>12,094</i>	<i>6,251</i>	<i>5,290</i>	<i>11,541</i>	<i>12,129</i>	<i>2,787</i>	<i>14,916</i>	<i>3,528</i>	<i>5,138</i>	<i>8,666</i>
Sites occupied by long-term guests	249	3,143	3,392	335	2,150	2,485	275	1,046	1,321	242	2,496	2,738
Other sites permanently reserved	2,496	712	3,208	2,631	872	3,503	7,026	583	7,609	683	277	960
Employment (persons)	160	233	393	187	186	373	279	77	356	77	176	253
<i>June quarter 1994—</i>												
Establishments	44	49	93	53	36	89	83	10	93	27	42	69
Capacity												
On-site vans	365	902	1,267	304	449	753	520	177	697	131	388	519
Other powered sites	5,308	3,886	9,194	5,807	2,819	8,626	9,981	1,288	11,269	2,528	3,459	5,987
Unpowered sites	779	211	990	1,349	336	1,685	2,329	346	2,675	1,101	536	1,637
Cabins, flats, etc.	254	207	461	296	188	484	446	51	497	139	291	430
<i>Total capacity</i>	<i>6,706</i>	<i>5,206</i>	<i>11,912</i>	<i>7,756</i>	<i>3,792</i>	<i>11,548</i>	<i>13,276</i>	<i>1,862</i>	<i>15,138</i>	<i>3,899</i>	<i>4,674</i>	<i>8,573</i>
Sites occupied by long-term guests	466	3,003	3,469	657	1,799	2,456	579	775	1,354	294	2,466	2,760
Other sites permanently reserved	2,953	170	3,123	3,283	224	3,507	7,687	99	7,786	765	250	1,015
Employment (persons)	201	204	405	236	152	388	300	45	345	83	167	250
SITE NIGHTS OCCUPIED ('000)												
<i>June quarter 1993</i>	<i>302.6</i>	<i>387.7</i>	<i>690.3</i>	<i>324.6</i>	<i>303.3</i>	<i>627.9</i>	<i>714.8</i>	<i>153.7</i>	<i>868.5</i>	<i>155.4</i>	<i>301.5</i>	<i>456.9</i>
<i>1994—</i>												
April	131.9	107.3	239.2	152.5	69.4	222.0	280.2	28.9	309.1	59.6	93.5	153.1
May	124.5	108.9	233.4	137.5	68.7	206.2	269.9	28.7	298.6	53.4	95.5	149.0
June	121.4	106.5	227.9	133.0	67.0	200.0	263.9	27.7	291.6	59.9	94.0	154.0
<i>June quarter 1994</i>	<i>377.8</i>	<i>322.7</i>	<i>700.5</i>	<i>423.1</i>	<i>205.1</i>	<i>628.2</i>	<i>814.0</i>	<i>85.3</i>	<i>899.3</i>	<i>172.9</i>	<i>283.1</i>	<i>456.0</i>
SITE OCCUPANCY RATES (per cent)												
<i>June quarter 1993</i>	<i>60.7</i>	<i>64.4</i>	<i>62.7</i>	<i>57.1</i>	<i>63.0</i>	<i>59.8</i>	<i>64.8</i>	<i>60.6</i>	<i>64.0</i>	<i>48.4</i>	<i>64.7</i>	<i>58.1</i>
<i>1994—</i>												
April	65.5	68.7	66.9	65.6	61.0	64.1	70.4	51.7	68.1	50.9	66.7	59.5
May	59.9	67.5	63.2	57.2	58.4	57.6	65.6	49.7	63.6	44.2	65.9	56.1
June	60.3	68.2	63.8	57.2	58.9	57.7	66.3	49.7	64.2	51.2	67.1	59.9
<i>June quarter 1994</i>	<i>61.9</i>	<i>68.1</i>	<i>64.6</i>	<i>59.9</i>	<i>59.4</i>	<i>59.8</i>	<i>67.4</i>	<i>50.3</i>	<i>65.3</i>	<i>48.7</i>	<i>66.6</i>	<i>58.5</i>
TAKINGS FROM ACCOMMODATION (\$'000)												
<i>June quarter 1993</i>	<i>2,564</i>	<i>4,160</i>	<i>6,725</i>	<i>2,225</i>	<i>2,653</i>	<i>4,877</i>	<i>4,230</i>	<i>1,273</i>	<i>5,504</i>	<i>1,646</i>	<i>2,859</i>	<i>4,505</i>
<i>1994—</i>												
April	1,256	1,249	2,505	1,312	751	2,063	2,081	301	2,381	568	944	1,511
May	894	1,222	2,116	814	709	1,523	1,542	292	1,834	450	918	1,368
June	943	1,214	2,156	850	739	1,589	1,393	283	1,676	599	961	1,560
<i>June quarter 1994</i>	<i>3,092</i>	<i>3,685</i>	<i>6,777</i>	<i>2,976</i>	<i>2,199</i>	<i>5,175</i>	<i>5,015</i>	<i>876</i>	<i>5,891</i>	<i>1,616</i>	<i>2,822</i>	<i>4,439</i>

For footnotes see end of table.

TABLE 12 — CARAVAN PARKS (a) BY STATISTICAL DIVISION, NEW SOUTH WALES—continued

Particulars	Mid - North Coast (SD)			Northern (SD)			North Western (SD)			Central West (SD)		
	Short-term	Long-term	Total	Short-term	Long-term	Total	Short-term	Long-term	Total	Short-term	Long-term	Total
ESTABLISHMENTS, CAPACITY AND EMPLOYMENT												
<i>June quarter 1993—</i>												
Establishments	41	87	128	24	31	55	20	24	44	15	18	33
Capacity												
On-site vans	350	846	1,196	138	312	450	157	194	351	56	152	208
Other powered sites	4,379	5,668	10,047	828	1,018	1,846	628	884	1,512	564	735	1,299
Unpowered sites	1,832	1,576	3,408	748	661	1,409	1,884	472	2,356	877	275	1,152
Cabins, flats, etc.	323	460	783	102	137	239	102	112	214	56	93	149
<i>Total capacity</i>	<i>6,884</i>	<i>8,550</i>	<i>15,434</i>	<i>1,816</i>	<i>2,128</i>	<i>3,944</i>	<i>2,771</i>	<i>1,662</i>	<i>4,433</i>	<i>1,553</i>	<i>1,255</i>	<i>2,808</i>
Sites occupied by long-term guests	503	2,703	3,206	68	450	518	55	333	388	39	308	347
Other sites permanently reserved	684	448	1,132	128	11	139	365	8	373	84	8	92
Employment (persons)	181	322	503	63	86	149	70	56	126	58	49	107
<i>June quarter 1994—</i>												
Establishments	53	74	127	25	31	56	23	22	45	12	20	32
Capacity												
On-site vans	523	770	1,293	137	303	440	180	238	418	48	153	201
Other powered sites	4,950	4,866	9,816	955	893	1,848	737	841	1,578	436	827	1,263
Unpowered sites	1,690	1,274	2,964	780	620	1,400	2,035	356	2,391	821	319	1,140
Cabins, flats, etc.	245	543	788	137	141	278	121	107	228	41	135	176
<i>Total capacity</i>	<i>7,408</i>	<i>7,453</i>	<i>14,861</i>	<i>2,009</i>	<i>1,957</i>	<i>3,966</i>	<i>3,073</i>	<i>1,542</i>	<i>4,615</i>	<i>1,346</i>	<i>1,434</i>	<i>2,780</i>
Sites occupied by long-term guests	677	2,456	3,133	94	402	496	58	323	381	19	324	343
Other sites permanently reserved	977	352	1,329	137	12	149	347	8	355	84	14	98
Employment (persons)	191	301	492	71	75	146	79	54	133	41	55	96
SITE NIGHTS OCCUPIED ('000)												
<i>June quarter 1993</i>	<i>208.9</i>	<i>341.8</i>	<i>550.7</i>	<i>42.1</i>	<i>54.5</i>	<i>96.6</i>	<i>68.9</i>	<i>47.0</i>	<i>115.8</i>	<i>23.0</i>	<i>44.3</i>	<i>67.3</i>
<i>1994—</i>												
April	93.1	103.1	196.2	17.1	16.7	33.9	25.6	17.0	42.5	7.4	16.8	24.3
May	82.4	98.7	181.2	15.8	16.8	32.6	23.3	15.9	39.2	5.2	15.0	20.3
June	86.1	99.4	185.5	15.5	16.1	31.5	23.3	16.2	39.4	5.7	14.2	20.0
<i>June quarter 1994</i>	<i>261.7</i>	<i>301.2</i>	<i>562.9</i>	<i>48.4</i>	<i>49.5</i>	<i>98.0</i>	<i>72.1</i>	<i>49.1</i>	<i>121.2</i>	<i>18.4</i>	<i>46.1</i>	<i>64.5</i>
SITE OCCUPANCY RATES (per cent)												
<i>June quarter 1993</i>	<i>33.4</i>	<i>43.9</i>	<i>39.2</i>	<i>25.5</i>	<i>28.1</i>	<i>26.9</i>	<i>27.3</i>	<i>31.0</i>	<i>28.7</i>	<i>16.3</i>	<i>38.8</i>	<i>26.3</i>
<i>1994—</i>												
April	41.9	46.1	44.0	28.5	28.5	28.5	27.7	36.7	30.7	18.4	39.1	29.1
May	35.9	42.7	39.3	25.4	27.6	26.5	24.4	33.3	27.4	12.5	33.8	23.5
June	38.7	44.5	41.6	25.7	27.4	26.5	25.2	34.9	28.5	14.2	33.1	23.9
<i>June quarter 1994</i>	<i>38.8</i>	<i>44.4</i>	<i>41.6</i>	<i>26.5</i>	<i>27.8</i>	<i>27.2</i>	<i>25.8</i>	<i>35.0</i>	<i>28.8</i>	<i>15.0</i>	<i>35.3</i>	<i>25.5</i>
TAKINGS FROM ACCOMMODATION (\$'000)												
<i>June quarter 1993</i>	<i>2,030</i>	<i>3,163</i>	<i>5,194</i>	<i>409</i>	<i>549</i>	<i>958</i>	<i>575</i>	<i>498</i>	<i>1,072</i>	<i>242</i>	<i>511</i>	<i>753</i>
<i>1994—</i>												
April	931	1,117	2,048	165	186	351	246	187	433	82	219	301
May	662	948	1,610	137	182	319	186	176	362	70	189	259
June	776	1,034	1,810	139	178	317	198	189	387	68	180	248
<i>June quarter 1994</i>	<i>2,369</i>	<i>3,099</i>	<i>5,468</i>	<i>441</i>	<i>547</i>	<i>987</i>	<i>629</i>	<i>553</i>	<i>1,182</i>	<i>220</i>	<i>588</i>	<i>808</i>

For footnotes see end of table.

TABLE 12 — CARAVAN PARKS (a) BY STATISTICAL DIVISION, NEW SOUTH WALES—continued

Particulars	South Eastern (SD)			Murrumbidgee and Far West (SDs)			Murray (SD)			New South Wales		
	Short-term	Long-term	Total	Short-term	Long-term	Total	Short-term	Long-term	Total	Short-term	Long-term	Total
	ESTABLISHMENTS, CAPACITY AND EMPLOYMENT											
<i>June quarter 1993—</i>												
Establishments	60	25	85	31	12	43	46	15	61	410	383	793
Capacity												
On-site vans	638	139	777	175	94	269	192	112	304	2,891	3,852	6,743
Other powered sites	5,546	1,981	7,527	1,265	337	1,602	3,675	651	4,326	36,768	26,160	62,928
Unpowered sites	2,606	613	3,219	432	160	592	757	221	978	14,526	6,089	20,615
Cabins, flats, etc.	545	182	727	181	51	232	414	76	490	2,649	1,944	4,593
<i>Total capacity</i>	<i>9,335</i>	<i>2,915</i>	<i>12,250</i>	<i>2,053</i>	<i>642</i>	<i>2,695</i>	<i>5,038</i>	<i>1,060</i>	<i>6,098</i>	<i>56,834</i>	<i>38,045</i>	<i>94,879</i>
Sites occupied by long-term guests	206	502	708	54	169	223	201	264	465	2,227	13,564	15,791
Other sites permanently reserved	2,338	745	3,083	102	2	104	2,027	162	2,189	18,564	3,828	22,392
Employment (persons)	306	87	393	78	35	113	167	43	210	1,626	1,350	2,976
<i>June quarter 1994—</i>												
Establishments	67	19	86	32	11	43	50	11	61	469	325	794
Capacity												
On-site vans	662	105	767	192	82	274	182	82	264	3,244	3,649	6,893
Other powered sites	6,297	1,175	7,472	1,369	252	1,621	4,225	338	4,563	42,593	20,644	63,237
Unpowered sites	2,720	499	3,219	490	160	650	905	131	1,036	14,999	4,788	19,787
Cabins, flats, etc.	580	160	740	211	37	248	446	76	522	2,916	1,936	4,852
<i>Total capacity</i>	<i>10,259</i>	<i>1,939</i>	<i>12,198</i>	<i>2,262</i>	<i>531</i>	<i>2,793</i>	<i>5,758</i>	<i>627</i>	<i>6,385</i>	<i>63,752</i>	<i>31,017</i>	<i>94,769</i>
Sites occupied by long-term guests	364	394	758	65	157	222	284	175	459	3,557	12,274	15,831
Other sites permanently reserved	3,030	189	3,219	195	3	198	2,434	13	2,447	21,892	1,334	23,226
Employment (persons)	319	68	387	92	29	121	182	29	211	1,795	1,179	2,974
SITE NIGHTS OCCUPIED ('000)												
<i>June quarter 1993</i>	<i>310.9</i>	<i>127.2</i>	<i>438.0</i>	<i>49.9</i>	<i>25.0</i>	<i>75.0</i>	<i>248.5</i>	<i>47.4</i>	<i>296.0</i>	<i>2,449.6</i>	<i>1,833.4</i>	<i>4,283.0</i>
<i>1994—</i>												
April	146.0	22.1	168.1	25.3	7.1	32.4	106.4	9.3	115.6	1,045.2	491.3	1,536.4
May	125.0	20.6	145.6	19.9	6.3	26.2	97.8	8.2	106.0	954.8	483.3	1,438.1
June	126.5	20.0	146.5	19.2	6.3	25.5	95.3	8.1	103.4	949.8	475.6	1,425.4
<i>June quarter 1994</i>	<i>397.5</i>	<i>62.7</i>	<i>460.2</i>	<i>64.4</i>	<i>19.7</i>	<i>84.1</i>	<i>299.5</i>	<i>25.6</i>	<i>325.0</i>	<i>2,949.8</i>	<i>1,450.1</i>	<i>4,399.9</i>
SITE OCCUPANCY RATES (per cent)												
June quarter 1993	36.7	47.9	39.4	26.7	42.9	30.6	54.2	49.2	53.3	47.4	53.0	49.6
<i>1994—</i>												
April	47.4	38.0	45.9	37.3	44.7	38.7	61.6	49.3	60.4	54.6	52.8	54.0
May	39.3	34.3	38.5	28.3	38.3	30.2	54.8	42.1	53.5	48.3	50.3	49.0
June	41.1	34.4	40.0	28.4	39.5	30.5	55.2	43.0	54.0	49.7	51.1	50.1
June quarter 1994	42.6	35.5	41.5	31.3	40.8	33.1	57.2	44.8	55.9	50.8	51.4	51.0
TAKINGS FROM ACCOMMODATION (\$'000)												
June quarter 1993	2,594	886	3,480	706	276	983	1,471	463	1,934	18,693	17,291	35,984
<i>1994—</i>												
April	1,328	261	1,589	318	76	394	669	112	781	8,955	5,402	14,357
May	712	211	924	225	67	292	415	80	496	6,106	4,996	11,102
June	755	232	987	251	68	318	422	84	506	6,392	5,162	11,555
<i>June quarter 1994</i>	<i>2,795</i>	<i>705</i>	<i>3,499</i>	<i>794</i>	<i>211</i>	<i>1,004</i>	<i>1,506</i>	<i>276</i>	<i>1,783</i>	<i>21,453</i>	<i>15,560</i>	<i>37,014</i>

(a) A review of the occupancy of individual caravan parks resulted in reclassification in September quarter 1993 of a net 57 caravan parks from predominantly long-term to predominantly short-term.

TABLE 13 — VISITOR HOSTELS BY STATISTICAL DIVISION, NEW SOUTH WALES

Particulars	Sydney (SD)	Hunter (SD)	Illawarra (SD)	Richmond- Tweed (SD)	Mid - North Coast (SD)	South Eastern (SD) (a)	Balance of State	New South Wales (a)
ESTABLISHMENTS, CAPACITY AND EMPLOYMENT								
<i>June quarter 1993—</i>								
Establishments	38	6	4	9	7	5	7	76
Bed spaces	2,844	178	127	580	285	650	253	4,917
Employment (persons)	136	25	5	34	12	50	15	277
<i>June quarter 1994—</i>								
Establishments	37	7	4	10	7	5	7	77
Bed spaces	2,817	252	125	647	287	634	217	4,979
Employment (persons)	135	26	6	31	12	54	16	280
GUEST NIGHTS								
<i>June quarter 1993</i>	<i>143,482</i>	<i>1,903</i>	<i>1,930</i>	<i>24,138</i>	<i>7,332</i>	<i>13,947</i>	<i>3,947</i>	<i>196,679</i>
<i>1994—</i>								
April	53,067	1,440	871	10,519	2,381	4,865	1,523	74,666
May	49,445	699	557	8,442	2,238	4,083	991	66,455
June	47,939	817	540	6,987	2,059	5,131	1,137	64,610
<i>June quarter 1994</i>	<i>150,451</i>	<i>2,956</i>	<i>1,968</i>	<i>25,948</i>	<i>6,678</i>	<i>14,079</i>	<i>3,651</i>	<i>205,731</i>
BED OCCUPANCY RATES (per cent)								
<i>June quarter 1993</i>	<i>55.6</i>	<i>11.7</i>	<i>16.7</i>	<i>45.7</i>	<i>28.3</i>	<i>23.6</i>	<i>17.1</i>	<i>44.1</i>
<i>1994—</i>								
April	62.8	19.0	23.2	54.2	27.7	25.6	23.4	50.0
May	56.6	8.9	14.4	42.1	25.2	20.8	14.7	43.1
June	56.7	10.8	14.4	36.0	23.9	27.0	17.5	43.3
<i>June quarter 1994</i>	<i>58.7</i>	<i>12.9</i>	<i>17.3</i>	<i>44.1</i>	<i>25.6</i>	<i>24.4</i>	<i>18.5</i>	<i>45.4</i>
GUEST ARRIVALS								
<i>June quarter 1993</i>	<i>35,435</i>	<i>875</i>	<i>1,300</i>	<i>9,761</i>	<i>4,557</i>	<i>7,114</i>	<i>1,598</i>	<i>60,640</i>
<i>1994—</i>								
April	12,829	666	523	3,467	1,487	2,284	639	21,895
May	11,327	341	297	2,909	1,379	2,154	370	18,777
June	11,265	492	268	2,568	1,509	2,278	546	18,926
<i>June quarter 1994</i>	<i>35,421</i>	<i>1,499</i>	<i>1,088</i>	<i>8,944</i>	<i>4,375</i>	<i>6,716</i>	<i>1,555</i>	<i>59,598</i>
AVERAGE LENGTH OF STAY (days)								
<i>June quarter 1993</i>	<i>4.0</i>	<i>2.2</i>	<i>1.5</i>	<i>2.5</i>	<i>1.6</i>	<i>2.0</i>	<i>2.5</i>	<i>3.2</i>
<i>1994—</i>								
April	4.1	2.2	1.7	3.0	1.6	2.1	2.4	3.4
May	4.4	2.0	1.9	2.9	1.6	1.9	2.7	3.5
June	4.3	1.7	2.0	2.7	1.4	2.3	2.1	3.4
<i>June quarter 1994</i>	<i>4.2</i>	<i>2.0</i>	<i>1.8</i>	<i>2.9</i>	<i>1.5</i>	<i>2.1</i>	<i>2.3</i>	<i>3.5</i>
TAKINGS FROM ACCOMMODATION (\$'000)								
<i>June quarter 1993</i>	<i>1,753</i>	<i>23</i>	<i>21</i>	<i>301</i>	<i>80</i>	<i>305</i>	<i>42</i>	<i>2,525</i>
<i>1994—</i>								
April	692	16	11	136	28	168	16	1,066
May	634	8	7	106	26	65	10	857
June	601	10	6	91	24	69	12	813
<i>June quarter 1994</i>	<i>1,927</i>	<i>34</i>	<i>23</i>	<i>333</i>	<i>78</i>	<i>302</i>	<i>38</i>	<i>2,736</i>

(a) Includes Australian Capital Territory establishments.

EXPLANATORY NOTES

- *****
- INTRODUCTION** 1 This publication contains data for New South Wales from a quarterly survey of tourist accommodation establishments. The period covered by the latest survey is the 3 months ended 30 June 1994.
- SCOPE** 2 Tourist accommodation establishments currently included in the survey comprise two groups:
- Establishments which provide predominantly short-term accommodation (i.e. for periods of less than 2 months) to the general public. These include:
 - Hotels, motels and guest houses, with facilities* being hotels licensed to operate a public bar and motels, private hotels and guest houses all of which provide a bath (or shower) and toilet in most guest rooms and have breakfast available for guests.
 - NOTE:** From December quarter 1993, hotel, motel and guest house establishments with fewer than five rooms have been formally excluded from the scope of this statistical collection. This change in scope resulted in the exclusion of 20 establishments which in the September quarter 1993 Survey aggregates for New South Wales represented 1.1 per cent of hotel, motel and guest house establishments but accounted for only 0.1 per cent of accommodation capacity, occupancy and takings.
 - Holiday flats, units and houses* (excluding establishments predominantly operated on a time share basis) which are operated by owners or managers who have sole letting rights to at least five flats, units or houses or by real estate agents for short-term letting. They are mainly self-contained in terms of cooking, bath (or shower) and toilet facilities and do not have breakfast available for guests. Data for holiday flats, units and houses include short-term owner occupation as well as paying guest occupation.
 - Visitor hostels* which provide accommodation to visitors on a bed basis (rather than by the room). This category does not include establishments providing charity type accommodation (e.g. Salvation Army hostels) nor hotels, motels and guest houses without in-room facilities which provide accommodation on a per room basis.
 - *Caravan parks* which provide either predominantly short-term (i.e. for periods of less than 2 months) or predominantly long-term (i.e. for periods of 2 months or more) accommodation to the general public and which provide powered sites for caravans and toilet, shower and laundry facilities for guests.
- 3 Data collected and published for each type of establishment (other than holiday flats, units and houses) include both long-term and short-term guests at these establishments.
- 4 Establishments which provide more than one type of accommodation (e.g. a motel with attached caravan park) are treated as two or more separate establishments. However, self-contained units, flats, cabins, etc. attached to hotels, motels or to caravan parks are included in the capacity for those establishments and not treated as separate holiday flat, unit or house establishments.
- DEFINITIONS**
- 5 *Number of establishments.* For hotels, motels and guest houses, caravan parks and visitor hostels, the number of establishments within the scope of the survey which operated for any part of the survey period, or which closed temporarily for the quarter for seasonal reasons.
- 6 *Number of letting entities.* For holiday flats, units and houses, the number of owners, managers or real estate agents within the scope of the survey who operated for any part of the survey period.
- 7 Capacity in terms of *Guest rooms, Bed spaces, Holiday units* or *Caravan park sites, etc.* is the maximum number available to accommodate paying guests during the survey period. Capacity closed temporarily for seasonal reasons is included.
- 8 *Bed spaces.* Three-quarter beds are counted as one bed space; double beds as two bed spaces. Cots are excluded .
- 9 *Total caravan park capacity* comprises *On-site vans, Other powered sites, Unpowered sites* and *Cabins, etc.*

EXPLANATORY NOTES—*continued*DEFINITIONS—*continued*

10 *Room nights available.* The number of guest rooms available multiplied by the number of days for which they were available during the survey period. Includes operating periods only for establishments closing (other than for seasonal reasons) or opening during the survey period.

11 Occupancy in terms of *Room nights*, *Unit nights* or *Site nights occupied* refers to the total number of nights each guest room, holiday unit or caravan park site, etc. was occupied during the survey period.

NOTE: From September quarter 1992, caravan park sites, etc. permanently reserved for 2 months or more at the end of the survey period but only casually occupied by their tenants have been recorded continuously as *Site nights occupied* irrespective of whether the tenants of individual sites were in residence on any particular night. (See also paragraph 14 below). Previously, usage of these sites was recorded as *Site nights occupied* only when their tenants were in the park. Total site occupancy rates from September quarter 1992 are therefore not comparable with those from previous quarters.

12 Occupancy in terms of *Guest nights* refers to the total number of nights each paying guest stayed during the survey period.

13 *Sites occupied by long-term guests.* The total number of sites, etc. occupied at the end of the survey period by guests who have stayed continuously for 2 months or more.

14 *Other sites permanently reserved.* The total number of powered and unpowered sites, on-site vans and cabins, etc. continuously let for 2 months or more by the end of the survey period to tenants who occupy the sites only on a casual or sporadic basis. Separate data for this item are available only from September quarter 1992.

15 *Occupancy rates* represent occupancy expressed as a percentage of total capacity available during the survey period – e.g.

$$\text{Room occupancy rate (\%)} \text{ for the period} = \frac{\text{Room nights occupied}}{(\text{Guest rooms}) \times (\text{No. of days in the period})} \times 100$$

providing that, for establishments closing (other than for seasonal reasons) or opening during the period, the denominator of the above expression includes only operating periods.

16 *Guest arrivals.* The total number of paying guests counted only on the first night they stayed at the accommodation establishment.

17 *Unit lettings.* The total number of times a holiday flat, unit or house was occupied by a new tenant, counted only on the first night it was occupied by the new tenant.

18 *Average length of stay* is expressed in number of days and is calculated:

- for hotels, motels and guest houses and for visitor hostels, by dividing *Guest nights* by *Guest arrivals* and
- for holiday flats, units and houses, by dividing *Unit nights occupied* by *Unit lettings*.

19 *Takings from accommodation.* Revenue received from the provision of accommodation. Takings from meals are excluded. Takings from accommodation for each month generally represent the takings received during that month. Where payments are received in advance of, or after, the provision of accommodation to guests, the monthly figure for takings from accommodation may not necessarily bear a direct relationship to the number of guests accommodated during the month. Rental and storage fees paid to caravan parks for the keeping of private vans in parks are included in the takings of the month they are received.

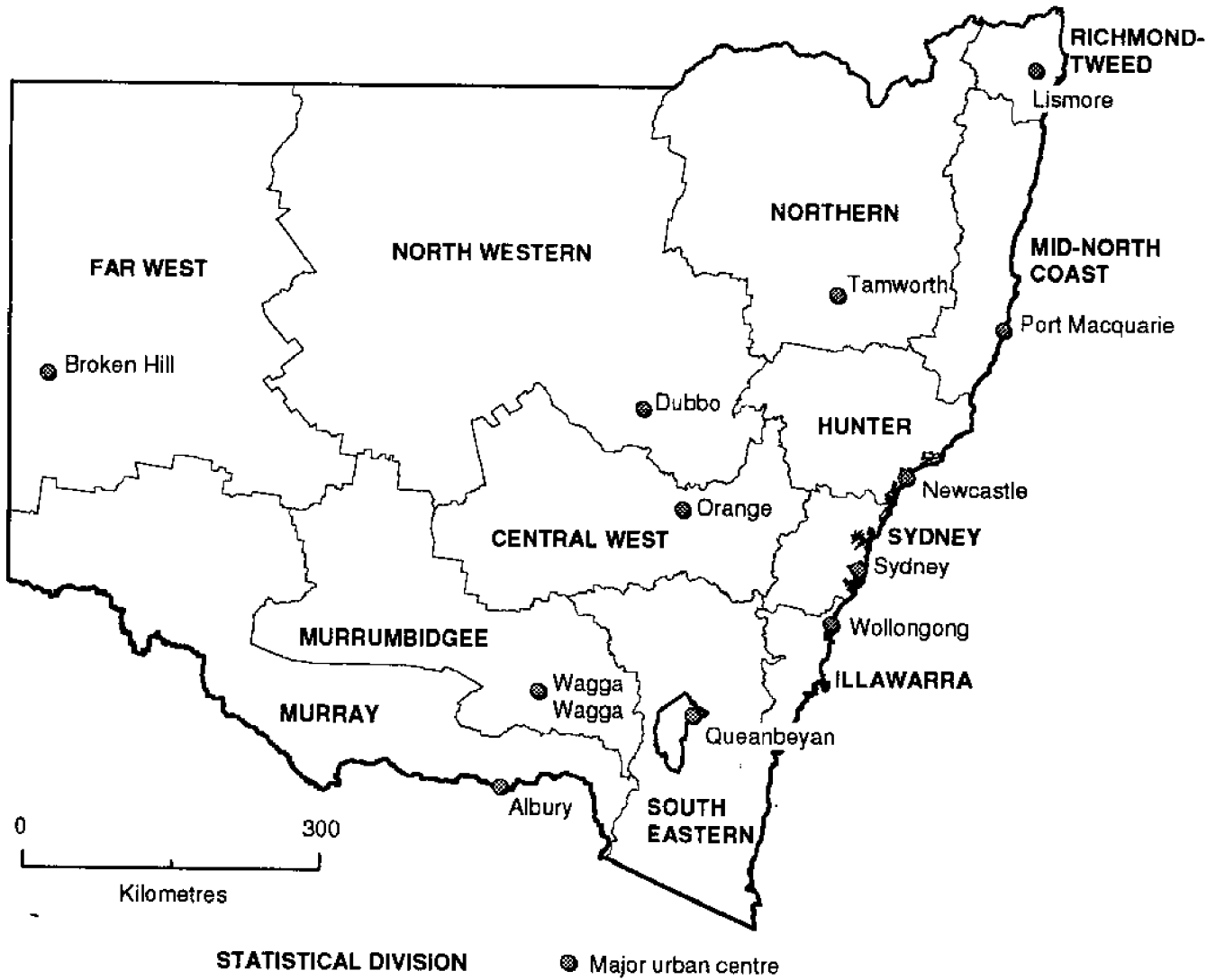
20 *Star grading.* The grading of hotels and motels with facilities based on the classification system used by members of the Australian Automobile Association (AAA). The gradings are allocated according to a points system based on the amenities and facilities available to guests. Details of the grading scheme are contained in the RACV-RAASA members' publication *Accommodation Australia*, or the individual tour guides produced by members of the AAA. For the purpose of classifying establishments to a star

EXPLANATORY NOTES—continued

DEFINITIONS—continued	grading in this publication, 'half' star gradings are ignored (e.g. a two and a half star grading has been shown as two star).
	21 <i>Employment.</i> The number of persons working at accommodation establishments at the end of the survey period (including working proprietors and those working on other than accommodation activities).
AUSTRALIAN STANDARD GEOGRAPHICAL CLASSIFICATION	22. Statistics presented in this publication have been classified according to the Australian Standard Geographical Classification (ASGC), Edition 2.3. This classification incorporates a number of hierarchic structures of geographic areas. The appropriate spatial units of the main structure of the ASGC used in this publication are defined as follows. <i>Statistical Local Areas (SLAs)</i> are in most cases either identical with, or have been aggregated to, the previously published whole or part legal Local Government Areas (LGAs) as defined under the (State) <i>Local Government Act 1919</i> and comprising cities (C), municipalities (M) and shires (S). In other cases, they are identical to each previously published unincorporated area. In aggregate, SLAs cover the whole of the State without gaps or overlaps. In some cases, legal LGAs overlap Statistical Subdivision boundaries and therefore comprise two SLAs (Part A and Part B) or three SLAs in the case of Cabonne (S) (Part A, Part B and Part C). <i>Statistical Subdivisions (SSDs).</i> These consist of one or more SLAs and form the intermediate size spatial unit for the presentation of regional data. <i>Statistical Divisions (SDs).</i> These consist of one or more SSDs. The divisions are designed to be relatively homogeneous regions characterised by identifiable social and economic units within the region, under the unifying influence of one or more major towns or cities. For more detailed information, refer to the ASGC (1216.0).
UNPUBLISHED STATISTICS	23 The ABS may make available on request certain unpublished tourist accommodation statistics. In particular, small geographic area and other tabulations are available for various accommodation types in a time series format. A charge may be made for this information.
RELATED PUBLICATIONS	24 Publications for Australia, and each State and Territory, are released by the respective offices of the ABS. Tourist accommodation statistics for past quarters are available on request. Other ABS publications which may be of interest include: <i>Directory of Tourism Statistics, 1991</i> (1130.0) (irregular) <i>Overseas Arrivals and Departures, Australia</i> (3401.0) (monthly) <i>Tourism Indicators Australia</i> (8634.0) (quarterly) <i>Tourist Accommodation, Australia</i> (8635.0) (quarterly) 25 Current publications produced by the ABS are listed in the <i>Catalogue of Publications and Products</i> (1101.0). The ABS also issues the <i>Publications Advice</i> (1105.0) on Tuesdays and Fridays which lists publications to be released in the next few days. Both the <i>Catalogue</i> and <i>Publications Advice</i> are available from any ABS office.
SYMBOLS AND OTHER USAGES	n.a. not available n.p. not available for publication but included in totals where applicable r figure or series revised since previous issue .. not applicable — nil or rounded to zero C City M Municipality S Shire SD Statistical Division 26 Where figures have been rounded, discrepancies may occur between totals and the sums of the component items.

GREG BRAY
Deputy Commonwealth Statistician

**REFERENCE MAP
STATISTICAL DIVISIONS, NEW SOUTH WALES**





For more information ...

The ABS publishes a wide range of statistics and other information on Australia's economic and social conditions. Details of what is available in various publications and other products can be found in the *ABS Catalogue of Publications and Products* available at all ABS Offices (see below for contact details).

Information Consultancy Service

Information tailored to special needs of clients can be obtained from the Information Consultancy Service available at ABS Offices (see Information Inquiries below for contact details).

National Dial-a-Statistic Line

0055 86 400

This number gives you 24 hour access, 365 days a year for a range of statistics.

Electronic Data Services

A large range of data is available via on-line services, diskette, magnetic tape, tape cartridge and CD ROM. For more details about our electronic data services, contact any ABS Office (see Information Inquiries below for contact details).

Bookshops and Subscriptions

There are over 500 titles of various publications available from ABS bookshops in all ABS Offices (see below Bookshop Sales for contact details). The ABS also provides a subscription service through which nominated publications are provided by mail on a regular basis at no additional cost (telephone Publications Subscription Service toll free on 008 02 0608 Australia wide).

Sales and Inquiries

Regional Offices	Information Inquiries	Bookshop Sales
SYDNEY	(02) 268 4611	(02) 268 4620
MELBOURNE	(03) 615 7000	(03) 615 7829
BRISBANE	(07) 222 6351	(07) 222 6350
PERTH	(09) 360 5140	(09) 360 5307
ADELAIDE	(08) 237 7100	(08) 237 7582
HOBART	(002) 205 800	(002) 205 800
CANBERRA	(06) 207 0326	(06) 207 0326
DARWIN	(089) 432 111	(089) 432 111
National Office		
ACT	(06) 252 6007	008 020 608



Information Services, ABS, GPO Box 796, Sydney NSW 2001
or any ABS office

